

FALL 2024

# Ridley's<sup>®</sup>

## GAMES



CHRONICLE BOOKS

# Who are we?

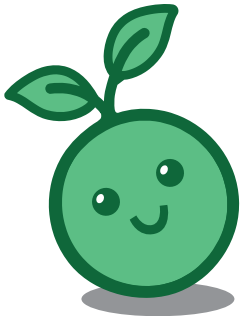
**Awesome games packed with personality — that's our passion!**



Established in 2009, Ridley's has propelled itself into the global games market, earning recognition with the launch of bestselling games such as Selfish and Avocado Smash.

From hilarious party games and fast-paced card games to jigsaw puzzles, trivia, and more, we make totally original, award-winning games for all ages.

## Our sustainability mission.



### Good Clean Fun

We're acutely aware of the impact our products have on our planet, and in 2021 we began making changes to reduce our environmental footprint.

We're prioritizing the use of responsibly sourced materials, such as FSC paper, recycled card, and soy inks. We're reducing the amount of plastic in our products, and where we're finding plastic difficult to remove, we're working to find recycled and recyclable alternatives that have less of an ecological impact.







It's a journey, and we've got a ways to go, but we hope you join us on our mission to make Good Clean Fun.

### Our Factories

We care how and where our products are made and we ensure all our suppliers have a valid and in-date full ethical audit reports.

# FALL 2024

NEW Games.....	4
Card Games.....	14
Roll & Write Games.....	34
Escape Room Games.....	38
Mini Games.....	42
Party Games.....	48
Jigsaws, Trivia, Playing Cards & Jokes.....	64
Disney & Star Wars.....	92

-  Bellyband
-  One-piece Box
-  Two-piece Box
-  CDU
-  Hangtag
-  Book



**Where to find us**  
[chroniclebooks.com/ridleysgames](https://chroniclebooks.com/ridleysgames)



@ridleysgames #ridleysgames

HOW TO PLAY



Scan the QR code to check out our handy How To Play videos!

Category  
**REALLY  
RANDOM**

**PETS ARE  
ALLOWED ON  
THE BED**

**'90S BOY  
BANDS**



**DIE HARD IS  
A CHRISTMAS  
MOVIE**

#### AIM OF GAME

It's easy to learn and simple to play; just say it, rate it, and grab it! Take the lead and draw a card from over 470 love-'em or hate-'em topics, then say it aloud. Now instinctively and secretly rate how you feel about it—Sour, So-So, or Sweet—then put on your best poker face as the other players try to guess your rating. After all, how well do they know you, really? This is where things can get spicy. When everyone's ready, you all flip over your Rating cards at the same time. If any other players match your rating, then the race is on for them to grab your Topic card and win the point! Once that madness is over and the disbelieving chat about your rating subsides ("What?! But you've always said you love watching Die Hard at Christmas!"), then the player on your left takes the lead, so you're in the grabbing game now. The honesty and tension will continue until a player collects seven Topic cards and is crowned the winner!



#### WHO IT'S FOR

Perfect for people with strong opinions and friends who think they know everything about each other.

#### WHAT'S INSIDE


476 Topic cards, 24 Rating cards, and English instructions.

#### PICKLES

##### Package size:

11.5 x 2.5 x 4.4 in  
64 x 292 x 112 mm

Carton Quantity: 12  
9781797229126

\$20.00 sugg retail 



**"A NIGHT OUT  
IS BETTER THAN  
A NIGHT IN"**

3-8  13+  20  MINS

**SWEET!**

**AIM OF GAME**

Shh! Hear that? "Well, I heard that REDACTED is using his lottery winnings to buy REDACTED. I mean, can you believe it?! I'd never have thought it of him!" That's the sound of breaking news. Let's fly! This is a race—a race to create the headlines. Use your cards to navigate your Spy Pigeon along its Flight Path and be the first to land the latest story at News Coop! But beware: watchful drones lie in wait, and your competition will do everything possible to sabotage your journey. And if you find yourself splatted with Lucky Poop, then you're in for a treat!

**WHO IT'S FOR**

This game is for gossips and people who will do what it takes to win.

**WHAT'S INSIDE**

6 wooden Spy Pigeon character pieces, 6 Flight Paths, 70 Game cards, 15 Headline cards, 5 Poop cards, 4 Drone tokens, and English instructions.

**IT FLIES, IT SPIES**




**Package size:**

7.5 x 7.5 x 1.6 in  
190 x 190 x 40 mm

**Carton Quantity:** 22  
9781797231884

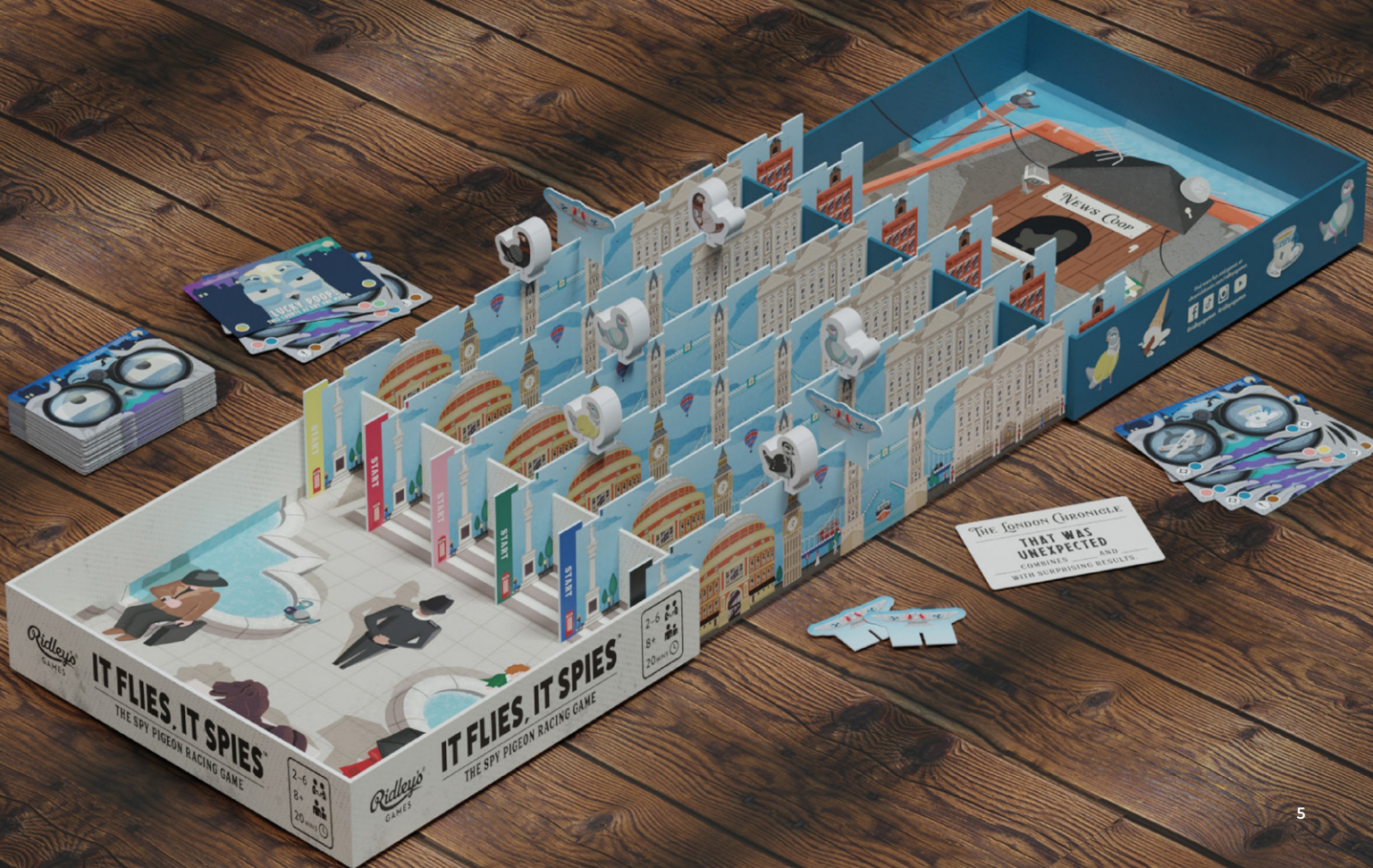
\$22.00 sugg retail 



2-6  8+  20 MINS 



PHOTOGRAPH BY LAUREN WALLACE





#### AIM OF GAME

Hum your favorite festive tunes on jazzy kazoos for your teammates to guess! Each team gets one minute per round to play through and correctly guess as many tunes as possible to win points. Or you can play as individuals with everyone guessing. Remember, it's just kazoo-ing; there's no singing involved! So long as you have a back catalog of festive tunes in your mind, that's all you need to play. And if you don't know a song, then pass, there's no pressure! The top scoring team (or player) wins the game!

#### WHO IT'S FOR

Friends and family who just want to have fun!

#### WHAT'S INSIDE

100 tune cards, 4 aluminum alloy kazoos, and instructions.


#### KAZOO THAT FESTIVE TUNE

##### Package size:

5.8 x 7.2 x 1.2 in  
182 x 146 x 31 mm

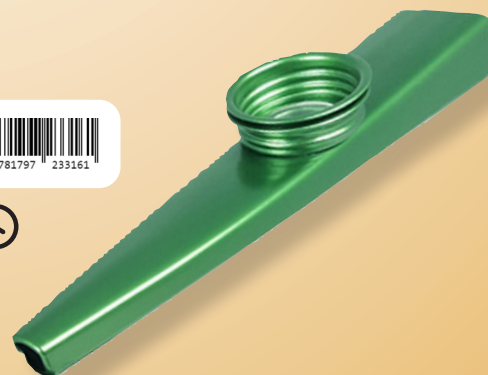
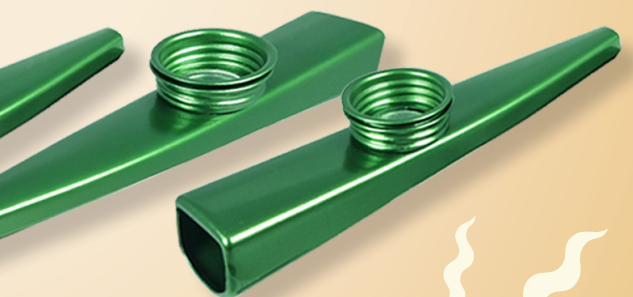
##### Carton Quantity: 24

9781797233161

\$14.00 sugg retail 



2+  8+  20 MINS 



**AIM OF GAME**

Relive the decade that brought us bell bottoms, lava lamps, and mirror balls. Time for trivia? Divide into two teams and take turns asking questions. Choose whether to play multiple-choice or question-only. Want to belt out a tune? Pick a player to sing the lyric line on the card to their team, who must correctly sing the next line back. And if they really want to bogart, they can name the artist and song title for bonus points!

**WHO IT'S FOR**

Anyone who wants to show what they know about the Decade of Disco!

**WHAT'S INSIDE**

40 question cards and instructions.

**1970s MUSIC TRIVIA GAME**  
CDU OF 6

**CDU size:**



4.6 x 3.7 x 6.4 in  
94 x 118 x 162 mm

**Package size:**

3.3 x 4.4 x 1 in  
112 x 84 x 25 mm

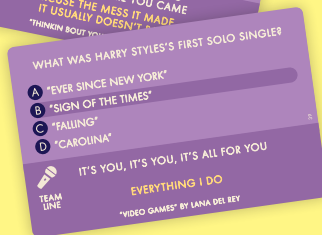
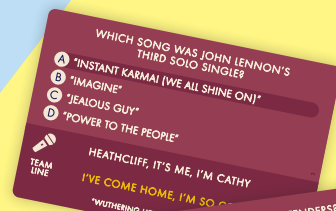
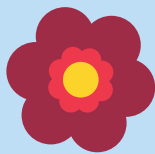
**Carton Quantity:** 48

**9781797229676**

**\$60.00 sugg retail**  



For internal store use only.  
Cannot be ordered in individual units.  
**9781797228990**  
**\$10.00 sugg retail**



**AIM OF GAME**

Relive the decade that brought us the ice bucket challenge, ghosting, and that white and gold (or was it blue and black?) dress. Time for trivia? Divide into two teams and take turns asking questions. Choose whether to play multiple-choice or question-only. Want to belt out a tune? Pick a player to sing the lyric line on the card to their team, who must correctly sing the next line back. And if they really want to flex, they can name the artist and song title for bonus points!

**WHO IT'S FOR**

Anyone who wants to #humblebrag

**WHAT'S INSIDE**

40 question cards and instructions.

**2010s MUSIC TRIVIA GAME**  
CDU OF 6

**CDU size:**



4.6 x 3.7 x 6.4 in  
94 x 118 x 162 mm

**Package size:**

3.3 x 4.4 x 1 in  
112 x 84 x 25 mm

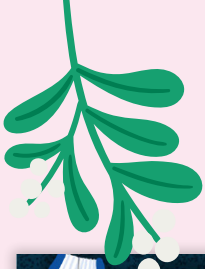
**Carton Quantity:** 48

**9781797229669**

**\$60.00 sugg retail**  



For internal store use only.  
Cannot be ordered in individual units.  
**9781797229003**  
**\$10.00 sugg retail**




**FESTIVE CURIOSITIES  
200-PIECE JIGSAW PUZZLE**

200-piece holiday-themed jigsaw puzzle. Features illustrations of familiar figures, classic tales, and charming oddities making this the ideal gift for fans of the festive season who are looking for a fun activity to put together in an afternoon or evening. Comes in compact giftable tube that is easily packed away to complete again next year! Made using 70% recycled materials and 30% FSC paper. Printed using soy inks.

**Jigsaw size:**  
13.8 x 7.9 in  
200 x 350 mm

**Package size:**  
3.7 x 5.1 x 3.7 in  
130 x 93 x 93 mm

**Carton Quantity:** 12  
**9781797231891**

**\$10.00 sugg retail** 







**SPOOKY CURIOSITIES  
200-PIECE JIGSAW PUZZLE**

200-piece halloween-themed jigsaw puzzle. Features illustrations of occult ornaments, mysterious brews, and intriguing oddities making this the ideal gift for fans of the spooky season who are looking for a fun activity to put together in an afternoon or evening. Comes in compact giftable tube that is easily packed away to complete again next year! Made using 70% recycled materials and 30% FSC paper. Printed using soy inks.

**Jigsaw size:**  
13.8 x 7.9 in  
200 x 350 mm

**Package size:**  
3.7 x 5.1 x 3.7 in  
130 x 93 x 93 mm

**Carton Quantity:** 12  
9781797231907

\$10.00 sugg retail 





**50 MUST-SEE MUSICALS  
BUCKET LIST 1000-PIECE PUZZLE**

1000-piece musicals-themed jigsaw puzzle. Features illustrations of 50 bucket list musicals recommendations. Includes poster guide. Comes in novelty bucket packaging. Made using 80% recycled materials and 20% FSC paper. Printed using soy inks.

**Jigsaw size:**  
21.7 x 27.6 in  
700 x 550 mm

**Package size:**  
6.4 x 7.5 x 4.9 in  
191 x 162 x 125 mm

**Carton Quantity:** 9  
9781797229133

\$22.00 sugg retail





**COCKTAIL LOVER'S PLAYING CARDS CDU OF 6**

Set of 54 playing cards in tin packaging. Featuring illustrations of 48 cocktails and information on key ingredients and equipment. Printed using FSC paper and soy inks.

**CDU size:**  
5.8 x 4.2 x 3.4 in  
107 x 148 x 87 mm

**Package size:**  
3.2 x 4 x 0.9 in  
102 x 82 x 23 mm

**Carton Quantity:** 48  
9781797229683

\$60.00 sugg retail



For internal store use only.  
Cannot be ordered in individual units.  
9781797229157  
\$10.00 sugg retail



**COMPLETE LIST  
FALL 2024**



# CARD GAMES

From fast-paced reaction games and trend-driven originals to calming solo player games and fresh takes on timeless classics, we have card games for all the family ages six and up.

## AIM OF GAME

Shh! Hear that? "Well, I heard that REDACTED is using his lottery winnings to buy REDACTED. I mean, can you believe it?! I'd never have thought it of him!" That's the sound of breaking news. Let's fly! This is a race—a race to create the headlines. Use your cards to navigate your Spy Pigeon along its Flight Path and be the first to land the latest story at News Coop! But beware: watchful drones lie in wait, and your competition will do everything possible to sabotage your journey. And if you find yourself splatted with Lucky Poop, then you're in for a treat!

## WHO IT'S FOR

This game is for gossips and people who will do what it takes to win.

## WHAT'S INSIDE

6 wooden Spy Pigeon character pieces, 6 Flight Paths, 70 Game cards, 15 Headline cards, 5 Poop cards, 4 Drone tokens, and English instructions.

## IT FLIES, IT SPIES

### Package size:

7.5 x 7.5 x 1.6 in  
190 x 190 x 40 mm

### Carton Quantity: 12

9781797231884

\$22.00 sugg retail 



Ridley's  
GAMES

THE LONDON CHRONICLE

2-6 PLAYERS | 8+ AGES

VOL. 007

RELIABLE NEWS CIRCULATED DAILY

20 MINUTES TO PLAY

# IT FLIES, IT SPIES™

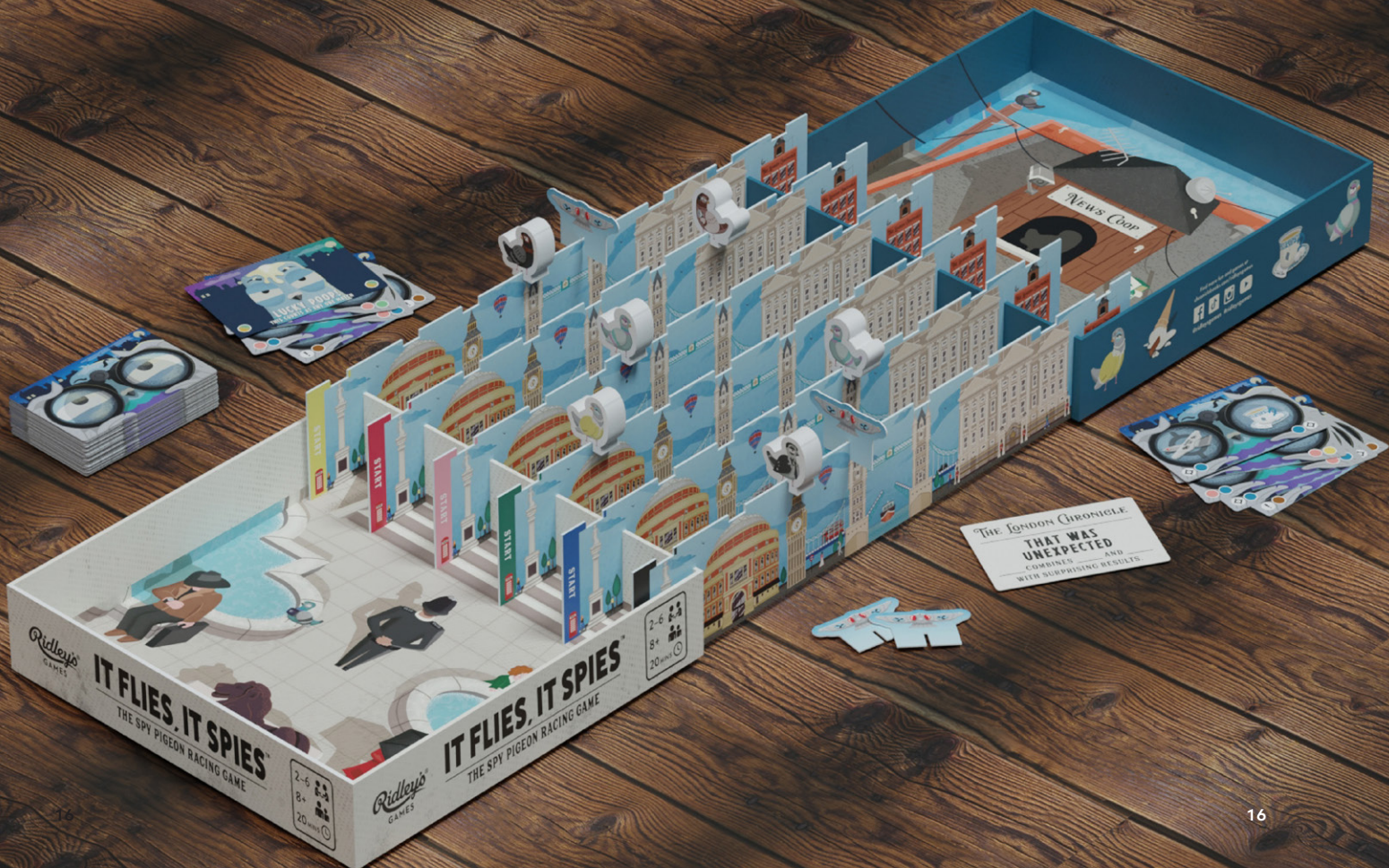


PHOTOGRAPH BY LAUREN WALLACE

## THE SPY PIGEON RACING GAME

CAN YOU GET THE LATEST SCOOP BACK TO THE COOP?

2-6  8+  20 MINS 







**AIM OF GAME**

In this third edition of our bestselling Selfish™ game, you and the other survivors must keep your heads above water as you swim through the ocean. Navigate dangerous seas, a terrifyingly large Kraken, ravenous sharks, and, worst of all, each other to try to preserve your rations for long enough either to be the first to reach the raft or the last one swimming. To really up the ante, the first player to reach the raft gets to decide whether they'll allow other players to join them or simply stretch out and savor the extra leg room. So, are you feeling selfless or selfish?

**WHO IT'S FOR**

Perfect for friends, families, and lovers of light strategy games.

**WHAT'S INSIDE**

78 Game cards, 40 Ocean cards, 5 Castaway cards, 2 Shark cards, 1 Raft card, 2 Waypoint strips, and instructions. Box made using 30% recycled materials. Tray made using 100% recycled materials. Printed using FSC paper and soy inks.



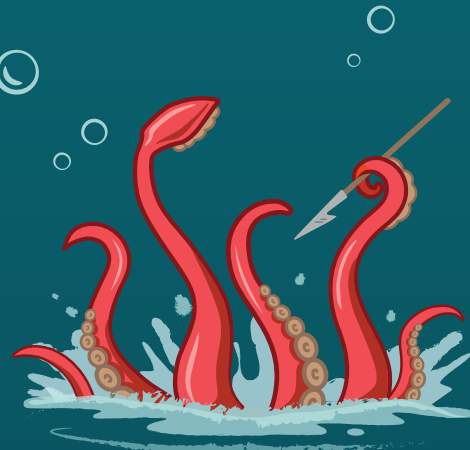
**SELFISH™: SHIPWRECKED EDITION**

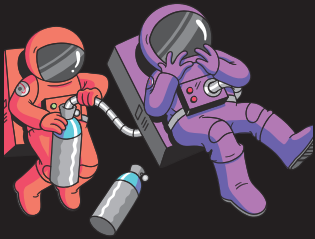
Package size:  
8.2 x 6.4 x 1.8 in  
162 x 209 x 45 mm

Carton Quantity: 24  
**0810073342514**  
\$20.00 sugg retail



2-5 8+ 20 MINS





### SELFISH™: SPACE EDITION

Light strategy card game with space theme. Includes 5 Astronaut cards, 48 Oxygen cards, 42 Space cards, 30 Game cards, 5 Reference cards, 1 Spaceship card, Mission guide, and English instructions. Printed using FSC paper and soy inks.

#### Package size:

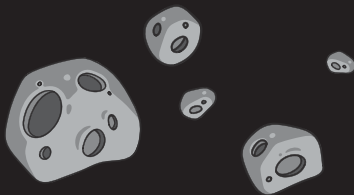
8.2 x 6.4 x 1.8 in  
162 x 209 x 45 mm

Carton Quantity: 24  
5055923767108

\$20.00 sugg retail 



2-5  8+  20 MINS 



### A LITTLE SELFISH™: SPACE MINI EDITION

This Mini Edition of our bestselling classic offers a faster game that can be played over a smaller playing surface—perfect for on-the-go fun. Includes 4 Astronaut cards, 76 Game cards, Mission Guide, and English instructions. Printed using FSC paper and soy inks.

#### Package size:

5.1 x 3.8 x 1.6 in  
97 x 130 x 40 mm

Carton Quantity: 24  
9781797229096

\$12.00 sugg retail 




2-4  8+  10 MINS 





**A LITTLE SELFISH™:  
ZOMBIE MINI EDITION**

This Mini Edition of our bestselling classic offers a faster game that can be played over a smaller playing surface—perfect for on-the-go fun. Includes 4 Survivor cards, 76 Game cards, Survival Guide, and English instructions. Printed using FSC paper and soy inks.

**Package size:**  
5.1 x 3.8 x 1.6 in  
97 x 130 x 40 mm  
**Carton Quantity:** 24  
9781797229102  
\$12.00 sugg retail 




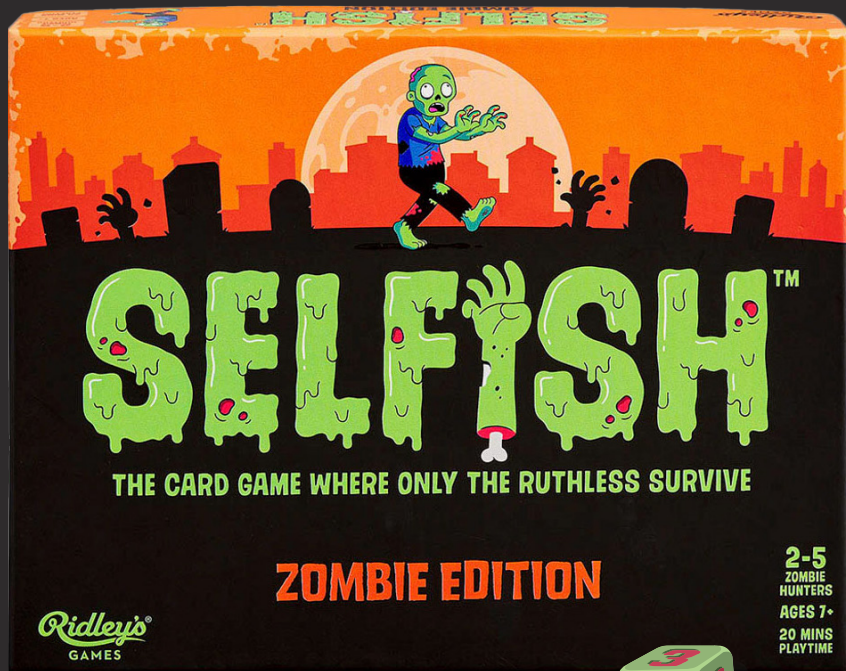
2-4  8+  10 MINS 



**SELFISH™: ZOMBIE EDITION**

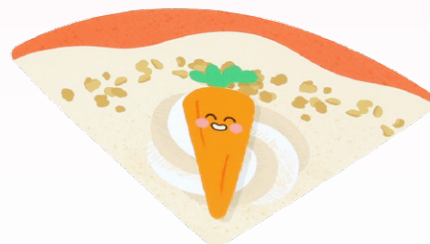
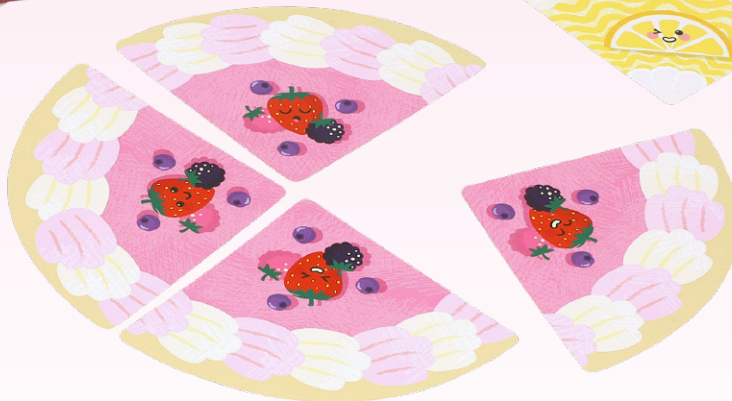
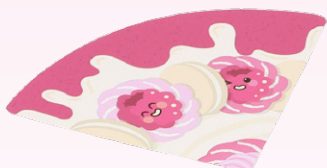
Light strategy card game with zombie theme. Includes 5 Survivor cards, 48 Supplies cards, 41 Wasteland cards, 33 Game cards, 5 Reference cards, 1 Chopper card, 1 wooden die, Survival Guide, and English instructions. Printed using FSC paper and soy inks.

**Package size:**  
8.2 x 6.4 x 1.8 in  
162 x 209 x 45 mm  
**Carton Quantity:** 24  
5055923765739  
\$20.00 sugg retail 



2-5  8+  20 MINS 





### AIM OF GAME

In this fast-paced card game, you are competing to be the first player to bake three perfect cakes to win. Each baker starts by drawing four cake slice cards face-up to create their baking area. When everyone's ready shout "3-2-1, PASS THE CAKE" to begin a frosting frenzy! All bakers draw a card from their pile at the same time and decide whether to keep it to begin baking that cake or pass it on. Collect four slices of the same type to complete a cake, then you move it to your cooling rack and get started on the next cake immediately. But watch out for your fellow bakers as they'll try to sabotage you! The icing on the cake? If a baker completes an entire cake using four Confetti Cake cards, they claim a sweet instant victory!

### WHO IT'S FOR

Perfect for friends, families, and lovers of bake offs.

### WHAT'S INSIDE

90 cake slice-shaped Game cards and EFIGS instructions in cake-slice shaped box. Printed using FSC paper and soy inks. Recyclable.

### PIECE OF CAKE

#### Package size:

4.9 x 4.3 x 1 in  
110 x 125 x 25 mm

#### Carton Quantity: 24

0810073342378

\$10.00 sugg retail



2-4 6+ 15 MINS






**PEACH SNAPS™ CDU OF 6**

Be the first to lose your peaches in this fast-paced card matching game and score a juicy victory! Includes 74 Game cards and EFIGS instructions. Ages 6+. 2+ players. Average 10 mins gameplay.

**CDU size:**  
11.4 x 11.3 x 7.3 in  
287 x 185 x 295 mm

**Package size:**  
6.4 x 8.2 x 1.8 in  
90 x 82 x 78 mm

**Carton Quantity:** 36  
**0810073340039**

**\$72.00** sugg retail    0 810073 540039  
For internal store use only.  
Cannot be ordered in individual units.  
5055923757888  
**\$12.00** sugg retail






**PIE Y'ALL™ CDU OF 6**

Don't be the one left with pie on your face! The object of the game is to avoid being the last player with cards, so you'll want to give away as much pie as possible. Includes 52 cards and EFIGS instructions. Ages 8+. 2-5 players. Average 15 mins gameplay.

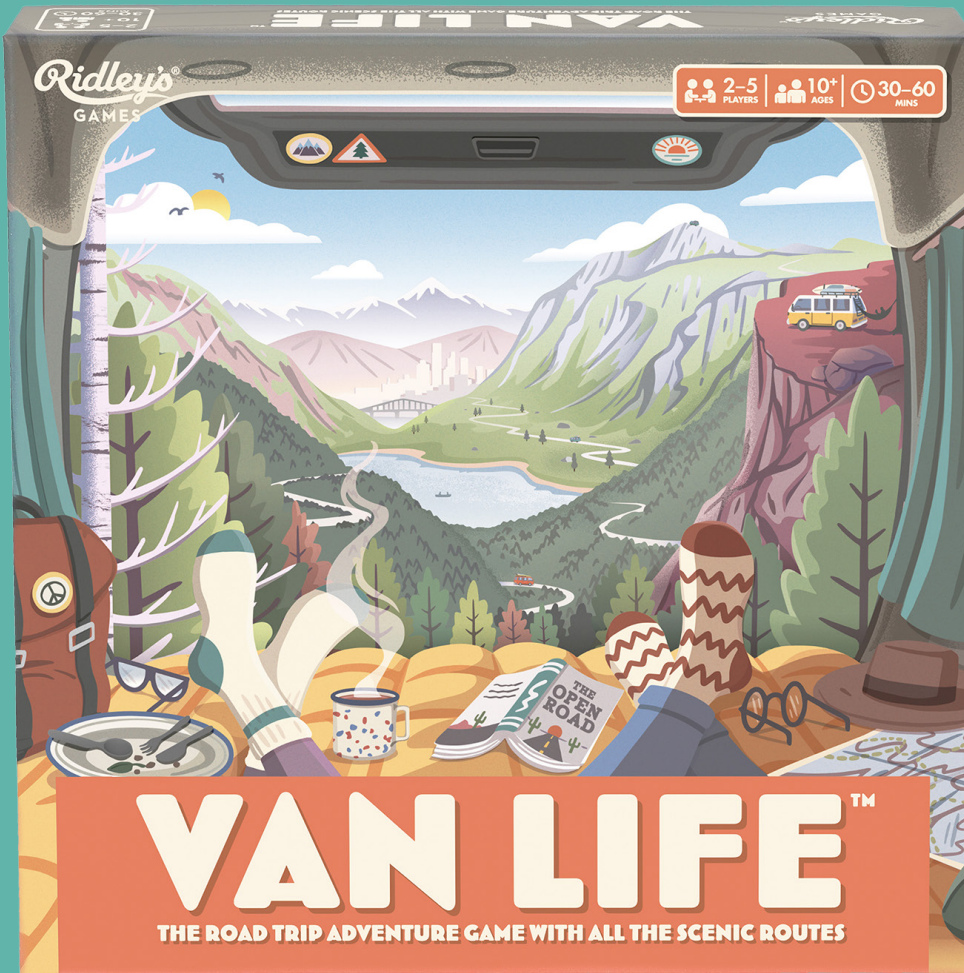
**CDU size:**  
4.6 x 4.5 x 6.7 in  
114 x 117 x 170 mm

**Package size:**  
4.5 x 4.5 x 1 in  
113 x 115 x 25 mm

**Carton Quantity:** 48  
**0810073342118**

**\$60.00** sugg retail    0 810073 342118  
For internal store use only.  
Cannot be ordered in individual units.  
0810073341739  
**\$10.00** sugg retail





**AIM OF GAME**

In this fun, travel-themed board game, players compete to see who can explore the adventurous island of Vantopia for a year and experience the most awesome Van Life™! As the seasons pass and events unfold, players travel around the board, visit the destinations in their hands, and earn Adventure Points for each completed journey. Along the way, learn new skills that earn you bonus Adventure Points at specific destinations on your travels. The player with the most Adventure Points at the end of the year wins!

**WHO IT'S FOR**

Perfect for friends, families, and travel and road trip enthusiasts.

**WHAT'S INSIDE**

50 Adventure Cards, 50 Let's Go Cards, 10 Life Cards, 10 Tour Cards, 10 van tokens, 10 action tokens, 5 wooden van meeples, 1 first player token, 1 gameboard, and instructions. Printed using FSC paper and soy inks.



**VAN LIFE™**

**Package size:**  
7.5 x 7.5 x 1.6 in  
190 x 190 x 40 mm

**Carton Quantity:** 12  
**0810073342460**  
**\$22.00** sugg retail



2-5 10+ 30-60 MINS





**AVOCADO SMASH™ CDU OF 9**

A fresh twist on the game of snap, you'll need to think and act quickly if you want to win! Includes 70 cards and EFIGS instructions in an avocado-shaped case. Ages 6+. 2+ players. Average 10 mins gameplay.

**CDU size:**



12.2 x 10.2 x 9.6 in  
260 x 310 x 245 mm

**Package size:**

3.8 x 5.1 x 2.5 in  
130 x 96 x 62 mm

**Carton Quantity:** 36  
0810073340008



**\$108.00** sugg retail  

For internal store use only.  
Cannot be ordered in individual units.  
5055923751886  
\$12.00 sugg retail

2+  6+  10  MINS



**VERSUS VERSES CASSETTE GAME**  
CDU OF 6

Rap battle game where two teams compete to create a "madlib" rap song. Includes 16 New Demo cards, 8 Rap Character cards, 2 Team cards, 1 Producer card, and instructions.

**CDU size:**  
4.4 x 2.8 x 4.6 in  
72 x 112 x 117 mm

**Package size:**  
4.3 x 2.8 x 0.75 in  
70 x 111 x 19 mm

**Carton Quantity:** 48  
0810073342149  
\$60.00 sugg retail



For internal store use only.  
Cannot be ordered in individual units.  
0810073341654  
\$10.00 sugg retail

2-12 8+ 30 MINS



**NEON KICK CASSETTE GAME**  
CDU OF 6

Dancing party game where players create and perform dance moves based on random two-word phrases and a particular body part. Includes 21 Dance Move cards, 1 Body Part spinner, and instructions.

**CDU size:**  
4.4 x 2.8 x 4.6 in  
72 x 112 x 117 mm

**Package size:**  
4.3 x 2.8 x 0.75 in  
70 x 111 x 19 mm

**Carton Quantity:** 48  
0810073342132  
\$60.00 sugg retail



For internal store use only.  
Cannot be ordered in individual units.  
0810073341630  
\$10.00 sugg retail

3-12 8+ 30 MINS





### AIM OF GAME

In this deckbuilding, suspense-filled game where cryptocurrency investors aim to make the most money, players try to buy and sell cryptocurrencies in an ever-changing crypto market. But keep an eye on events that affect the value of the cryptocurrencies as the game progresses. Special cards allow players to send viruses or ransomware to other players to hack into their crypto wallets and steal their assets! Balance risk with reward by playing strategies to try to win big—but be careful to not get rekt! The winner is the player who accumulates the most worth from cryptocurrencies and cash!

### WHO IT'S FOR

Perfect for friends, families, and crypto enthusiasts. No knowledge of crypto? No worries! This game is easy to understand and great fun even for people who don't know about or understand cryptocurrency.

### WHAT'S INSIDE

46 Resource cards, 18 Crypto cards, 13 Event cards, 3 Market Update cards, 6 price tokens, 4 player tokens, 2 game strips, 1 price tracker, 1 die, and instructions. Printed using FSC paper and soy inks.

### COIN CRASH™

Package size:  
6.3 x 6.3 x 1.8 in  
160 x 160 x 46 mm

Carton Quantity: 24

0810073342453

\$18.00 sugg retail



2-4 10+ 25 MINS





# GO BLOB FISH!

A blob-tastic twist on the classic card game



A NEW TWIST ON THE CLASSIC GAME OF HEARTS



## BROKEN HEARTS CDU OF 6

'Hearts' style card game featuring tattoo theme and illustrations. Includes 54 cards and EFIGS instructions packaged in a hangtag box. Ages 12+. 3-5 players. Average 15 mins gameplay.

**CDU size:**  
4.8 x 6 x 2.8 in  
153 x 123 x 72 mm

**Package size:**  
2.3 x 4.6 x 1 in  
117 x 59 x 24 mm

**Carton Quantity:** 36  
**0810073340930**  
\$48.00 sugg retail

For internal store use only.  
Cannot be ordered in individual units.  
0810073340473  
\$6.00 sugg retail



## GO BLOB FISH CDU OF 6

'Go Fish' style card game with a cute and fun blob fish theme. Includes 62 cards and EFIGS instructions packaged in a hangtag box. Ages 6+. 2-6 players. Average 15 mins gameplay.

**CDU size:**  
4.8 x 6.5 x 3.5 in  
166 x 123 x 90 mm

**Package size:**  
2.3 x 4.6 x 1 in  
117 x 59 x 31 mm

**Carton Quantity:** 36  
**0810073340923**  
\$48.00 sugg retail

For internal store use only.  
Cannot be ordered in individual units.  
0810073340527  
\$6.00 sugg retail



# DON'T HOLD IT

A NEW TWIST ON THE CLASSIC GAME OLD MAID



## DON'T HOLD IT CDU OF 6

'Old Maid' style card game with poo theme. Includes 62 cards and EFIGS instructions packaged in a hangtag box. Ages 6+. 3-5 players. Average 15 mins gameplay.

**CDU size:**  
4.8 x 6.7 x 3.6 in  
170 x 123 x 92 mm

**Package size:**  
2.3 x 3.5 x 1 in  
117 x 59 x 29 mm

**Carton Quantity:** 36  
**0810073340947**  
\$48.00 sugg retail

For internal store use only.  
Cannot be ordered in individual units.  
0810073340503  
\$8.00 sugg retail



Ridley's GAMES

# KICK IT™

THE DRAFT & SCORE CARD GAME



**BEAT THE COMPETITION TO LEAD YOUR TEAM TO GLORY!**



**AIM OF GAME**

In this fast-paced card game, players engage in offensive and defensive (Attack vs Defense) scenarios and try to finish each match with the most goals—but only one player's "team" can be victorious! There are two ways to play, in a League or Knockout tournament style, and each match consists of 6 rounds of multiple Attack vs Defense moves from each player. The player who has scored the most goals when the Full Time whistle blows is the winner! In the event of a tie, play moves into the Penalty Shootout round to decide who is the ultimate champion.

**WHO IT'S FOR**

Perfect for families, football/soccer fans and non-sport fans alike.

**WHAT'S INSIDE**

36 Player cards, 8 Time cards, 4 Coach cards, 4 Subs cards, 2 Penalty Round cards, 18 goal tokens, and instructions. Printed using FSC paper and soy inks.

**KICK IT™ CDU OF 6**

**CDU size:**  
9 x 4.3 x 13.3 in  
110 x 228 x 338 mm

**Package size:**  
4.3 x 4.3 x 4.3 in  
108 x 108 x 108 mm

**Carton Quantity:** 24  
**0810073342415**  
**\$84.00 sugg retail** 📦 📦



For internal store use only.  
Cannot be ordered in individual units.  
0810073342408  
\$14.00 sugg retail

2-4 8+ 10 MINS





### AIM OF GAME

In this easy-to-learn card game, your aim is to create as many three-in-a-row matches as possible to collect Roarsome points. The person who last saw a dinosaur (whether a fossil, cartoon, or walking down the street) goes first. Players take turns drawing cards and playing them onto the shared grid to create columns or rows of three matching cards. Every time there is a match, the double-sided cards get flipped over to create new chances. Oh, and watch out for the dino poop! The first player to collect 10 Roarsome points wins!

### WHO IT'S FOR

Perfect for friends, families, and dinosaur fans!



### WHAT'S INSIDE

60 double-sided Game cards and EFIGS instructions in a dinosaur egg-shaped case. The case is made using biodegradable cornstarch. Content printed using FSC paper and soy inks.

### ROARSOME! CDU OF 6



**CDU size:**  
7.8 x 5.4 x 9.1 in  
136 x 199 x 231 mm

**Package size:**  
3.7 x 5.1 x 2.7 in  
130 x 95 x 68 mm

**Carton Quantity:** 24  
**0810073343092**  
**\$72.00 sugg retail**  



For internal store use only.  
Cannot be ordered in individual units.  
0810073343085  
\$12.00 sugg retail

2-4  6+  20 MINS 





2+ 6+ 15 MINS

**NOPE!™**

Simple yet strategic, Nope!™ is an addictive colour-matching card game with a whole new twist. Can you be the last player with cards? Includes 104 Game cards and instructions.

**Package size:**

3.7 x 5.9 x 0.8 in  
150 x 95 x 20 mm

**Carton Quantity:** 48

5055923757871

\$11.00 sugg retail



Ridley's GAMES



**LUCKY CAT CARD GAME CDU OF 6**

Cat-themed card collecting game in novelty cat-shaped case. Includes 65 Game cards, 4 Reference cards, and EFIGS instructions. Ages 7+. 2-4 players. Average 20 mins gameplay.

**CDU size:**

8 x 11.6 x 11.1 in  
295 x 202 x 282 mm

**Package size:**

3.5 x 4.7 x 3.3 in  
119 x 89 x 84 mm

**Carton Quantity:** 24

0810073340121

\$90.00 sugg retail

For internal store use only.  
Cannot be ordered in individual units.

5055923781098

\$15.00 sugg retail







**AIM OF GAME**

Forage for the best fungi in this card-collecting game that will definitely grow on you. The aim is to try to collect clusters of 2 to 4 different fungi. Each completed cluster has a points value, and the player who reaches ten points first will be crowned champignon!

**WHO IT'S FOR**

Perfect for friends, families, and fungi fans.

**WHAT'S INSIDE**

Includes 60 Fungi cards, 35 point tokens, and instructions.

**FUNKY FUNGI**

**CDU size:**  
9 x 5.5 x 5.7 in  
140 x 230 x 145 mm

**Package size:**  
4.3 x 4.3 x 1.8 in  
110 x 110 x 45 mm

**Carton Quantity:** 24  
**0810073341517**  
**\$84.00** sugg retail



For internal store use only.  
Cannot be ordered in individual units.  
**0810073341739**  
**\$14.00** sugg retail



**AIM OF GAME**

See who's the best at monster spotting in this snap card game! You and your friends are out searching for the elusive Stomp, the Monster. But on your trek, you've lost your batteries and only have one working camera between you all! The aim of the game is to be the first player to collect two batteries and have the camera in front of you to snap a picture of Stomp to win!

**WHO IT'S FOR**

Perfect for families and groups of friends, and for Halloween or year-round monster fun!

**WHAT'S INSIDE**

Includes 70 cards and EFIGS instructions.

**STOMP THE MONSTER CDU OF 6**

**CDU size:**  
8.3 x 5 x 10 in  
130 x 210 x 252 mm

**Package size:**  
4 x 5 x 3.1 in  
125 x 100 x 80 mm

**Carton Quantity:** 36  
**0810073342057**  
**\$96.00** sugg retail



For internal store use only.  
Cannot be ordered in individual units.  
**0810073341821**  
**\$16.00** sugg retail





#### AIM OF GAME

Develop helpful mindfulness techniques to combat stress and burnout with this solo game that's a guided practice to promote wellness and self care in your day-to-day. Simply roll the wooden dice and deal out four cards that match the symbols you've rolled. There are 6 categories, including 'Notice Your Thoughts' and 'Time In Nature', and each card contains a prompt that will encourage you to take a moment to engage the five senses. This meditative, screen-free activity is the perfect way to relax, unwind, and reconnect with yourself.

#### WHO IT'S FOR

Perfect for young people and adults to slot into their daily routine to give a much deserved moment of calm.

#### WHAT'S INSIDE

Includes 60 Mindfulness cards, 4 wooden dice, and instructions. Printed using FSC paper and soy inks.

#### WHERE'S YOUR HEAD AT?™

CDU OF 6

CDU size:



11.2 x 4.2 x 4.2 in  
107 x 284 x 107 mm

Package size:

5.3 x 3.8 x 1.2 in  
97 x 135 x 30 mm

Carton Quantity: 24

0810073342187

\$108.00 sugg retail  



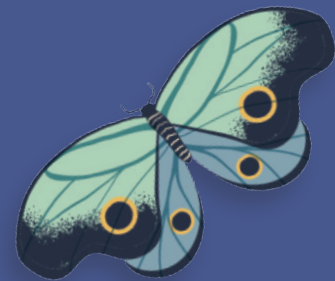
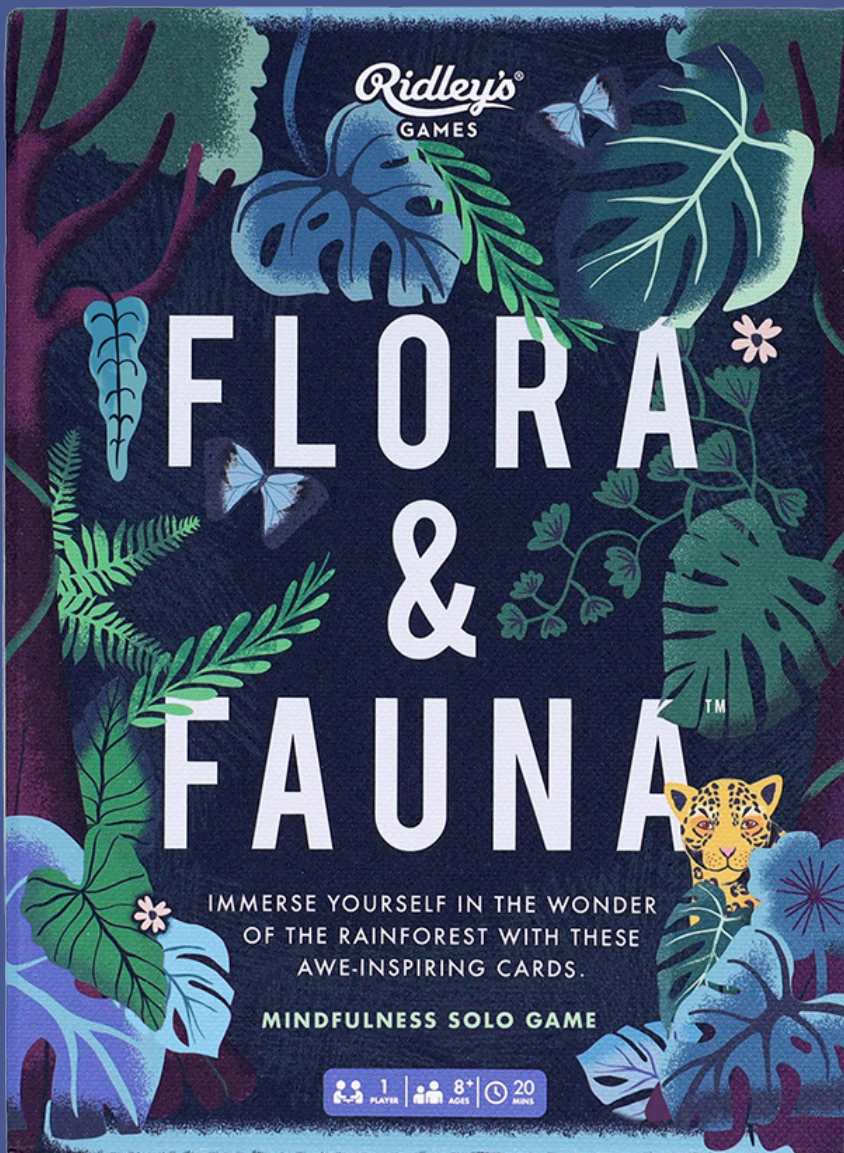
0 810073 342187

For internal store use only.  
Cannot be ordered in individual units.  
0810073341760  
\$18.00 sugg retail

1  12+  15  MINS







# FLORA & FAUNA™

IMMERSE YOURSELF IN THE WONDER OF THE RAINFOREST WITH THESE AWE-INSPIRING CARDS.

**MINDFULNESS SOLO GAME**

1 PLAYER | 8+ AGES | 20 MINS

## AIM OF GAME

In this immersive solo card game set in the Amazon rainforest, your goal is to help the rainforest flourish by arranging the plant and animal life in healthy ecosystems within its canopy. Earn points by creating as many Canopy Structures as possible and collecting the right Species and Food cards before they run out. Canopy Structure cards are like a blueprint for each ecosystem. Your aim is to use your actions to collect the Species cards shown in the Canopy Structure and make the rainforest thrive!



## WHO IT'S FOR

A calming game that inspires mindfulness and connecting with nature, it's perfect for people young and old who want a relaxing and fun solo game.

## WHAT'S INSIDE

96 Species cards, 40 Food cards, 10 Canopy Structure guides, 1 plot marker, 1 reserve plot marker, 1 player piece, and instructions. Printed using FSC paper and soy inks.

## FLORA & FAUNA™

### Package size:

5.5 x 7.5 x 1 in  
190 x 140 x 25 mm

### Carton Quantity: 24

0810073342385

\$18.00 sugg retail



1 PLAYER | 8+ AGES | 20 MINS



LANDING	POINTS
 <b>OUTSTANDING</b> 勇み足	125
 <b>HEADS DOWN</b> すてい投げ	100
 <b>SIDESWIPE</b> 突き落とし	75
 <b>FALL FLAT</b> つき手	50
 <b>TURTLE BACK</b> 押し倒し	25
 <b>OUT OF</b>	0

# ROLL & WRITE GAMES

With figurines and target areas rather than cards, our roll & write games offer portable entertainment for ages seven and up.

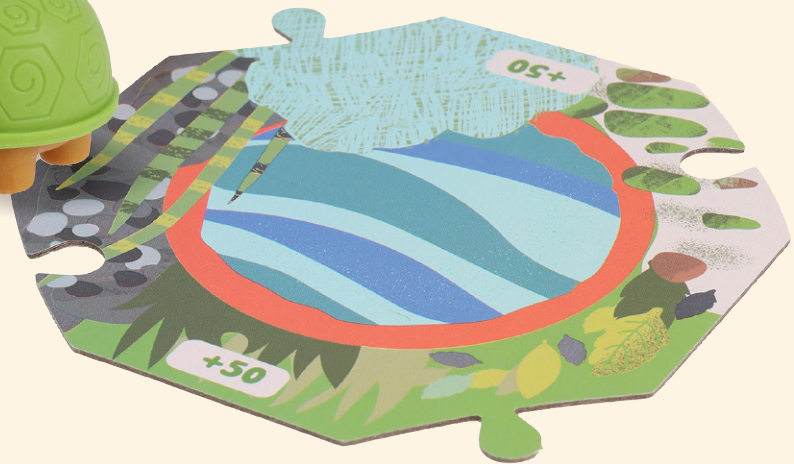
**WARNING:**  
CHOKING HAZARD - Small parts.  
Not for children under 3 years.

Ridley's  
GAMES

1+  
PLAYERS  
8+  
AGES  
15  
MINS

# TORTOISE TUMBLE

ONE SHELL OF A TORTOISE-ROLLING GAME



## AIM OF GAME

Get ready to roll your way to victory in this fun tumbling game! Impress your fellow players with your skills as you roll tortoises across the garden to score. You can piece together the jigsaw-style garden scene cards in a different way each time you play, so no two games are ever the same. How and where your tortoises land determines how many points you win, so you'll want to work out your best tumbling technique as quickly as you can. But be careful not to land on your back—that would be extremely embarrassing! The first player to earn 500 points is the winner and is crowned Top Tortoise Tumbler. Playing solo? Beat your own score in five turns!

## WHO IT'S FOR

Perfect for friends, families, and lovers of tortoises.

## WHAT'S INSIDE

Two rubber tortoises, nine garden scene cards, scorepad, and instructions.  
Printed using FSC paper and soy inks.


## TORTOISE TUMBLE

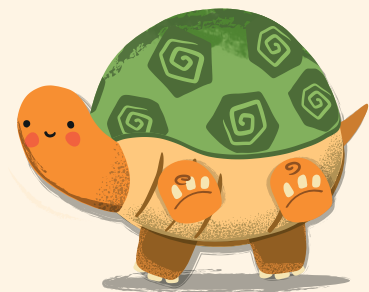
### Package size:

6 x 4.7 x 1.2 in  
120 x 150 x 30 mm

### Carton Quantity: 24

9781797228297

\$15.00 sugg retail 



1+  8+  15  MINS



**SUMO SLAM™**


This Sumo Slam! Game from Ridley's will test your throwing skills as you take turns slamming sunos into the dohyo ring, winning points for the various landing positions. It's a rapid-fire, high-energy family game recommended for two (2) or more players that you can play anywhere, thanks to its very own noodle box with sushi-style carry case. It's the ideal party game for teens and the perfect addition to family game night. Sumo Slam! includes two (2) rubber sumos, one (1) rope or dohyo ring, two (2) crib sheets, score pad, pencils, and plastic noodle box storage dome. The Ridley's Sumo Slam! game is recommended for players ages seven (7) or older. Average game play is 15 minutes. Package dimensions are 5" W x 5" L x 3" H. It's lightweight and compact making this an ideal travel game!

**Package size:**

5.1 x 3.9 x 5.1 in  
100 x 130 x 130 mm

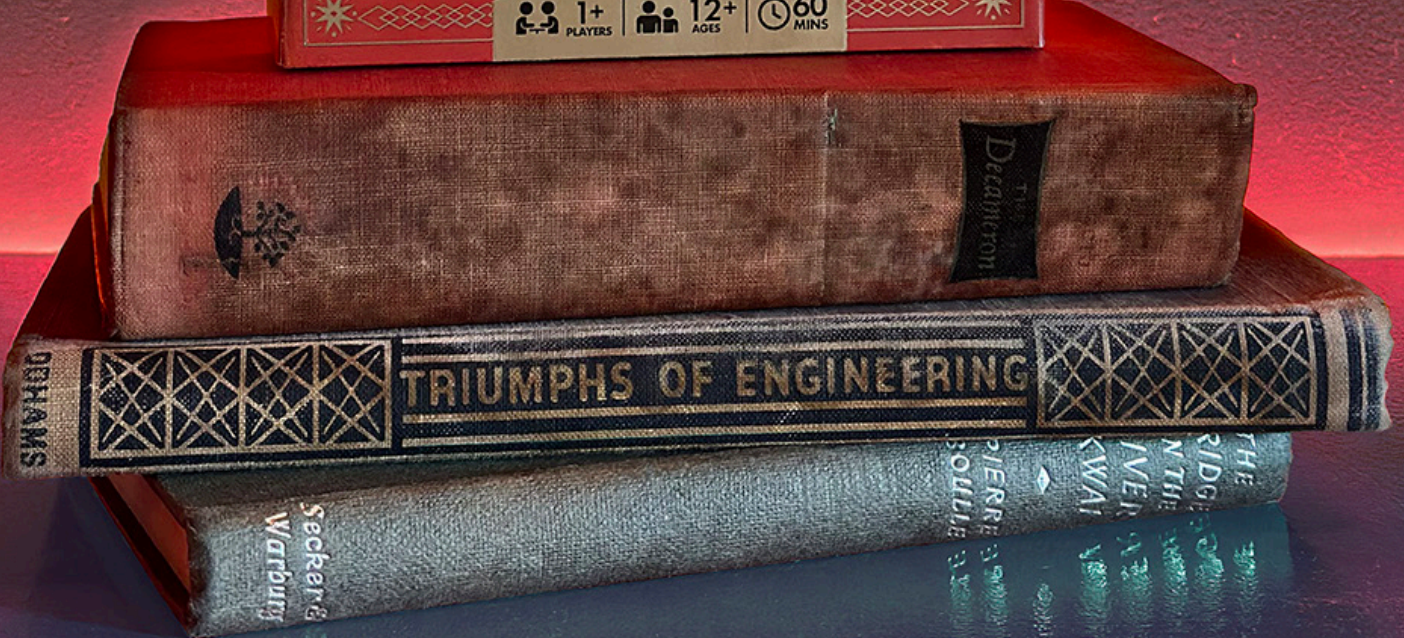
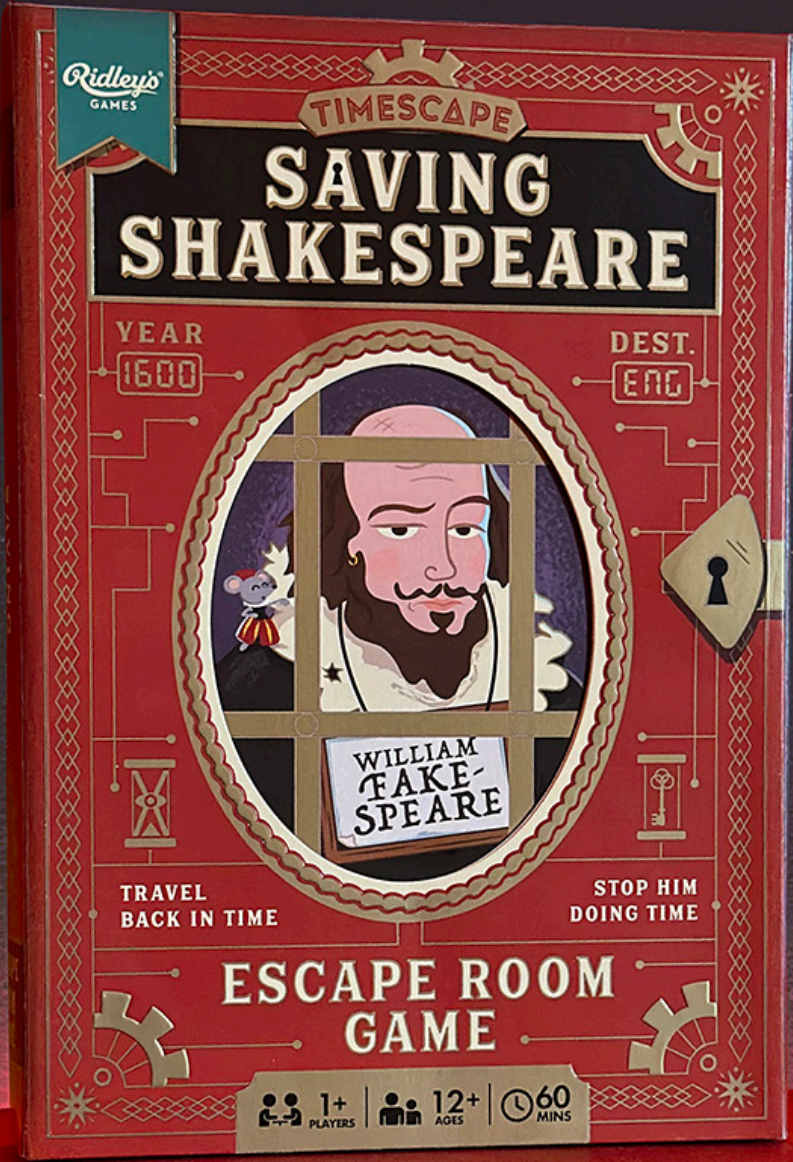
**Carton Quantity: 24**

5055923751909

\$21.00 sugg retail 

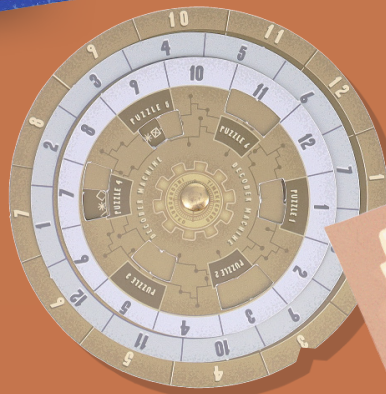


2+  7+  15 MINS 



# ESCAPE ROOM GAMES

Made for clue finders, puzzle solvers, and code breakers alike, our reusable escape room-style games are perfect for ages twelve and up.



### AIM OF GAME

Step back in time and immerse yourself in the world of Ancient Egypt. You and your fellow agents must work together to break the curse of Cleopatra's tomb before your esteemed Time Agency bosses inadvertently unleash it on the world! Solve challenging puzzles, break codes, and discover hidden treasures as you delve into this escape room-style game. Use your powers of logic, cunning, and courage to solve the seven puzzles and outwit the Queen of Kings. The fate of time itself rests in your hands.

### WHO IT'S FOR

Perfect for friends, families, puzzle solvers, and Escape Room fanatics.

### WHAT'S INSIDE

Mission, seven Puzzle Packets (containing clues and puzzle-solving aids), Answers, Scoresheet, and Decoder Wheel. Printed using FSC paper and soy inks.

### TIMESCAPE: CLEOPATRA'S CURSE

#### Package size:

5.1 x 7.7 x 1.2 in  
195 x 130 x 30 mm

#### Carton Quantity: 12

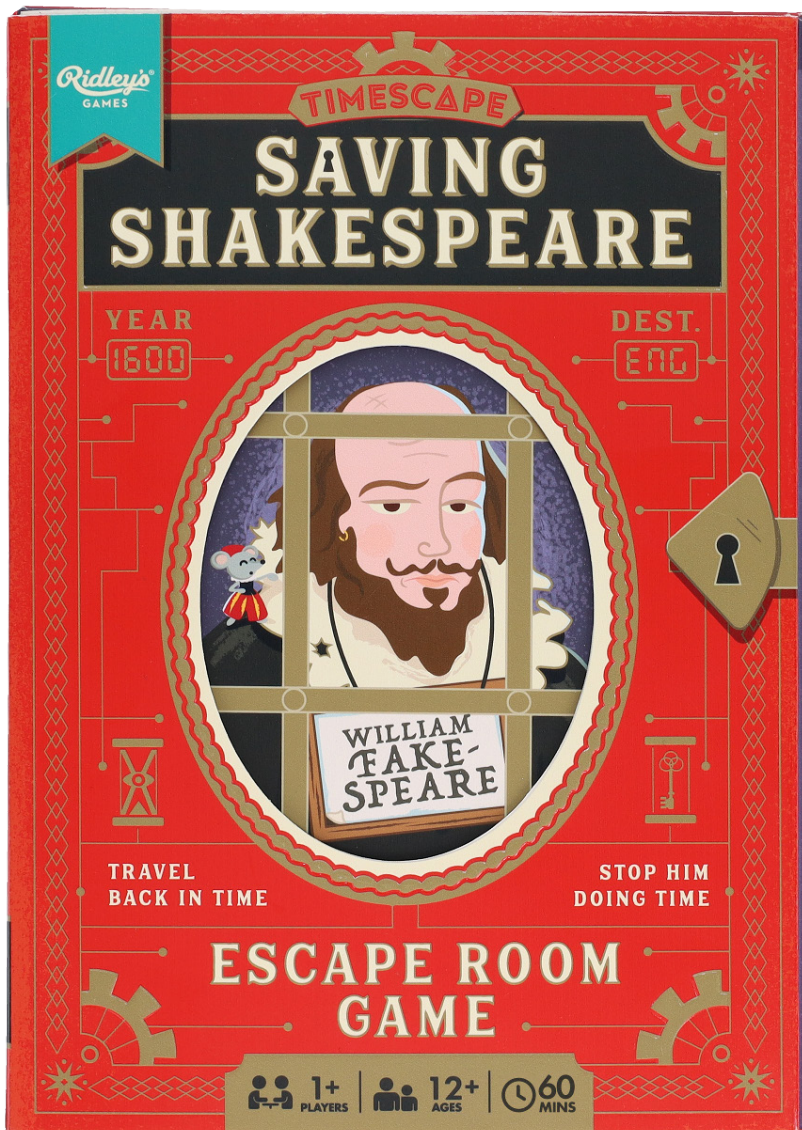
9781797229119

\$15.00 sugg retail 



1+  12+  90  MINS





**AIM OF GAME**

Step back in time and immerse yourselves in the world of Elizabethan England. You and your fellow agents must work together to restore the reputation of William Shakespeare who has been accused of—gasp!—larceny and plagiarism! You and your team will uncover clues, decipher codes, and unravel mysteries to navigate your way through this escape room-style game. Use your combined powers of logic, wit, and perseverance to solve the seven puzzles and prove the Bard is innocent. If you fail, history will be rewritten. But succeed in your mission and the true timeline will be restored!

**WHO IT'S FOR**

Perfect for friends, families, puzzle solvers, and Escape Room fanatics.

**WHAT'S INSIDE**

Mission, seven Puzzle Packets (containing clues and puzzle-solving aids), Answers, Scoresheet. Printed using FSC paper and soy inks.

**TIMESCAPE:  
SAVING SHAKESPEARE**

**Package size:**  
5.1 x 7.7 x 1.2 in  
195 x 130 x 30 mm

**Carton Quantity:** 12  
**0810073342392**

**\$15.00 sugg retail**



0810073342392

1+ 12+ 60 MINS



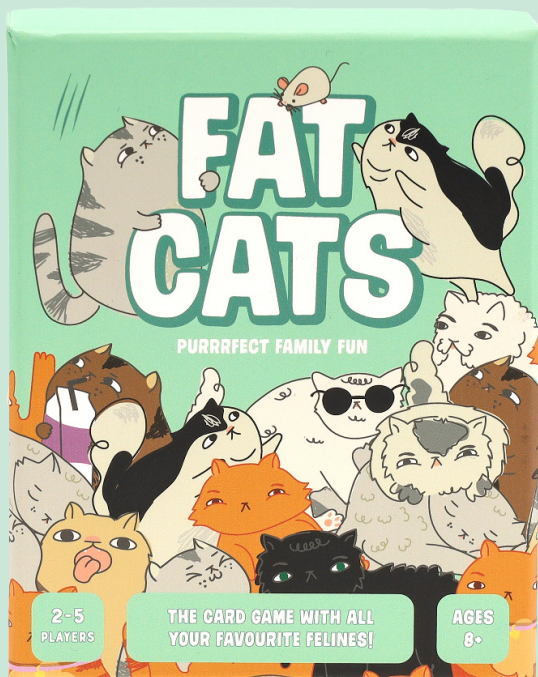
	Ryan	Tracy	Jill	
1	23	15	11	
2	13	17	5	
3				



# MINI GAMES

For entertainment on the go, our range of mini games offers tons of fun in small packages for ages six and up.





**AIM OF GAME**

Tricks win the treats in this a-meows-ing strategy card game. Players have two rounds to win after starting off with nine trick cards for nine chances to be the ultimate Fat Cat. Each trick and treat card has a points value, and players must choose which trick cards to play to score the most highly prized treats. Can the most pitiful sad eyes trick win the treat of a nice long nap? Or a cat-tastic performance land a tasty fishy? It's the most strategic cat who will land the most treat points in their kitty.

**WHO IT'S FOR**

Purrfect for friends, families, and cat lovers.

**WHAT'S INSIDE**

Includes 96 game cards and instructions.

**FAT CATS**

**Package size:**

3.9 x 5.3 x 1.6 in  
135 x 100 x 40 mm

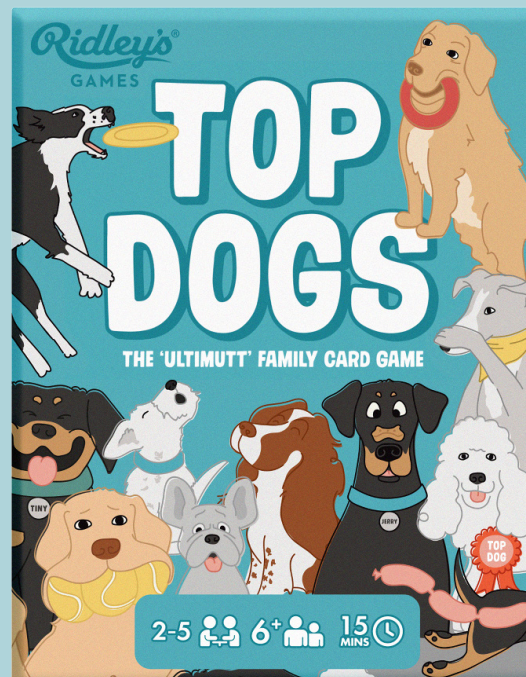
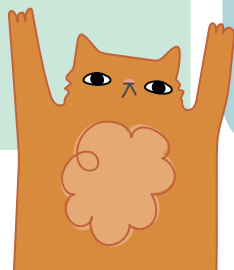
**Carton Quantity:** 24

**0810073340510**

**\$12.00** sugg retail



2-5 6+ 15 MINS



**AIM OF GAME**

Tricks win the treats in this barking good strategy card game. Players have two rounds to win after starting off with nine trick cards for nine chances to be the ultimutt Top Dog. Each trick and treat card has a points value, and players must choose which trick cards to play to score the most highly prized treats. Can playing fetch win the treat of a good head scratch? Or can a balancing act land some tasty sausages? Sniff out the 'Top Dog' card which will trump all the other tricks! Will you be top dog or sent to the doghouse?

**WHO IT'S FOR**

Pawfect for friends, families, and dog lovers.

**WHAT'S INSIDE**

Includes 96 game cards and instructions.

**TOP DOGS**

**Package size:**

3.9 x 5.3 x 1.6 in  
135 x 100 x 40 mm

**Carton Quantity:** 24

**0810073341333**

**\$12.00** sugg retail



2-5 6+ 15 MINS

# FORTUNE COOKIES



3-5 8+ 10 MINS

A strategy card game where players must choose the right fortune cookie or end up with a terrible fate. Change the luck of other players and bag yourself a good one before they're all eaten!

## FORTUNE COOKIES

Fortune cookie-themed unique strategy game. Includes 30 Action cards, 12 Fortune Cookie cards, 5 wooden star tokens, 1 score pad, 1 pencil, and instructions. Ages 8+. 3-5 players. Average 10 mins gameplay per player.

### Package size:

3.9 x 5.9 x 1.8 in  
151 x 101 x 46 mm

Carton Quantity: 24

5055923781135

\$12.00 sugg retail



# WHO LET THE DOG OUT ?



4-8 10+ 30 MINS

A social deduction game where players must figure out who amongst them is guilty. Check locations to narrow down the search for the poor lost dog, while staying suspicious of bad neighbors who pretend they're trying to help.

## WHO LET THE DOG OUT?

Social deduction game. Includes 56 tokens, 54 Game cards, 1 town map, and instructions. Ages 10+. 4-8 players. Average 30 mins gameplay.

### Package size:

3.9 x 5.9 x 1.8 in  
151 x 101 x 46 mm

Carton Quantity: 24

5055923781142

\$12.00 sugg retail





### AIM OF GAME

Warning: This game may divide you! How do you feel about pineapple on pizza? ABBA songs? Being tickled? The lead player uses the spinner to secretly vote whether they love or hate a subject, before all other players try to match the answer with their voting cards. Find out just how well you know your friends and family's true feelings!

### WHO IT'S FOR

Perfect for friends, family, and enemies.

### WHAT'S INSIDE

200 double-sided Subject cards, 40 Voting cards, voting spinner, score pad, pencil, and instructions.

### LOVE TO HATE

#### Package size:

3.9 x 5.9 x 1.8 in  
151 x 101 x 46 mm

Carton Quantity: 24

0810073340541

\$15.00 sugg retail



0 810073 340541



3-8 8+ 20 MINS



### AIM OF GAME

In this fast-paced light strategy card game, gardeners use trowel and error to harvest fruit and veg from the 4 community plots to grow the most impressive feast by the end of the game. Cultivate sets of the varieties of fruit and veg cards that are thriving in the garden with the ultimate aim to collect the ingredients needed to make as many of the four recipes (salad, sauce, soup, and stew) as you can to win the most points!

### WHO IT'S FOR

Perfect for friends, families, plant parents, and gardening lovers.

### WHAT'S INSIDE

Includes 54 Veg cards, 6 Chicken Thief cards, 4 Recipe cards, score pad, pencil, and instructions.

### CAN YOU DIG IT?

#### Package size:

3.9 x 5.9 x 1.6 in  
150 x 100 x 40 mm

Carton Quantity: 24

0810073341340

\$12.00 sugg retail



0 810073 341340

2-4 8+ 20 MINS



**THINK**

**FAST!**<sup>TM</sup>

THE PARTY GAME WHERE YOU

KNOW ALL THE ANSWERS!

Ridley's  
GAMES

PLAYERS ● AGES ● PLAYTIME ●





# PARTY GAMES

Whether you're staying in with family or heading out with friends, we've got party games to make every event memorable.

Category  
**REALLY  
RANDOM**

**PETS ARE  
ALLOWED ON  
THE BED**

**'90S BOY  
BANDS**



**DIE HARD IS  
A CHRISTMAS  
MOVIE**

#### AIM OF GAME

It's easy to learn and simple to play; just say it, rate it, and grab it! Take the lead and draw a card from over 470 love-'em or hate-'em topics, then say it aloud. Now instinctively and secretly rate how you feel about it—Sour, So-So, or Sweet—then put on your best poker face as the other players try to guess your rating. After all, how well do they know you, really? This is where things can get spicy. When everyone's ready, you all flip over your Rating cards at the same time. If any other players match your rating, then the race is on for them to grab your Topic card and win the point! Once that madness is over and the disbelieving chat about your rating subsides ("What?! But you've always said you love watching Die Hard at Christmas!"), then the player on your left takes the lead, so you're in the grabbing game now. The honesty and tension will continue until a player collects seven Topic cards and is crowned the winner!



#### WHO IT'S FOR

Perfect for people with strong opinions and friends who think they know everything about each other.

#### WHAT'S INSIDE


476 Topic cards, 24 Rating cards, and English instructions.

#### PICKLES

##### Package size:

11.5 x 2.5 x 4.4 in  
64 x 292 x 112 mm

Carton Quantity: 12  
9781797229126

\$20.00 sugg retail 



**"A NIGHT OUT  
IS BETTER THAN  
A NIGHT IN"**

3-8  13+  20  MINS

**SWEET!**



**AIM OF GAME**

Draw, memorize, or bluff your way to victory! There's three ways to play in this party game: drawing, seeing, or saying. Players roll the dice and take a category card that matches the color shown on the dice. Pink means the player needs to draw one of the two prompts (easy or hard) for the other players to guess. Yellow means the player tries to memorize and then recall the color of one of the symbols on the card. Green tests bluffing skills, with the player trying to convince the others whether or not they're being truthful about what's on the card. The game ends when any player has collected three cards of each color, and the player with the most points is the winner!

**WHO IT'S FOR**

Perfect for families and friends, it's especially fun in big groups.

**WHAT'S INSIDE**

Includes 240 cards, sand timer, dice, pen, board, and instructions.

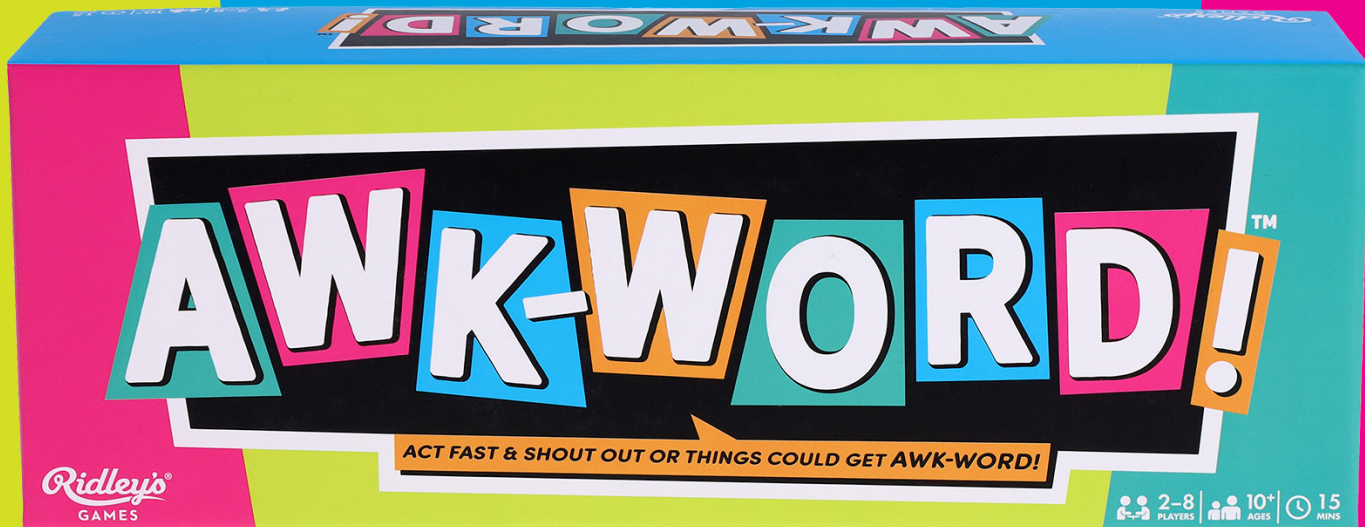
**DRAW IT, SEE IT, SAY IT™**

**Package size:**  
 5 x 6 x 3.7 in  
 150 x 130 x 95 mm  
**Carton Quantity:** 18  
**0810073341692**  
**\$18.00** sugg retail



2-8 8+ 30 MINS





**AIM OF GAME**

Act fast and shout out in this hella cool game where you'll want to collect the most chips. After the dice have been rolled, players take turns quickly shouting words that fit a topic. When you shout a valid answer that the referee approves, you get to take a chip. But if your word begins with any of the letters shown on the dice or you hesitate, then the referee dings the bell and you're done. If you have the most chips at the end, you win! Booyah!

**WHO IT'S FOR**

Perfect for groups of friends, families and 90s lovers.

**WHAT'S INSIDE**

200 Topic cards, 200 chips, 5 letter dice, 1 Awk-word bell, and instructions

**AWK-WORD™**

**Package size:**

9.8 x 3.5 x 2.8 in  
90 x 250 x 70 mm

**Carton Quantity:** 12

0810073341661

\$22.00 sugg retail



0 810073 341661

2-8 10+ 15 MINS



# THINK

THE PARTY GAME WHERE YOU

# FAST!™

KNOW ALL THE ANSWERS!



Think Fast™ is a loud, sociable, quick-fire party game where you know all the answers already, but can you identify the clues?

### AIM OF GAME

Teams go head-to-head in three rounds of this fast-paced quiz game! With each round the answers stay the same but the clues get progressively harder, until you're only given one word! You have 30 seconds to answer in, so you need to Think Fast™ if you want to win!

Get your random facts at the ready to solve clues about avocados, Darth Vader, reindeer and so much more!

### WHO IT'S FOR

Quick to learn and simple to play, it's a great game for families and friends to enjoy.

### WHAT'S INSIDE

400 Question cards, score pad, sand timer, pencil, and instructions.

### THINK FAST™

#### Package size:

11.5 x 4.4 x 2.5 in  
113 x 293 x 65 mm

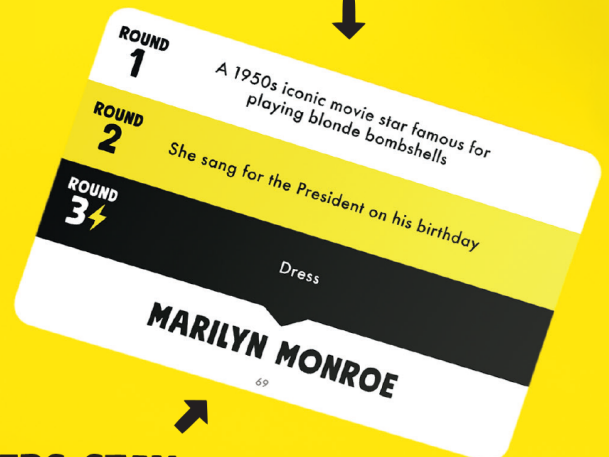
#### Carton Quantity: 12

5055923765746

\$20.00 sugg retail



CLUES  
GET HARDER



ANSWERS STAY  
THE SAME

3+ 8+ 30 MINS

Ridley's  
GAMES

2+  
PLAYERS  
6+  
AGES  
20  
MINS

# Waffle Topple™

A WAFFLE-Y  
CUTE BALANCING  
GAME!

 **WARNING**  
CHOKING HAZARD  
Not for children under



## AIM OF GAME

Stack delicious waffles and topping pieces onto the fork without toppling the stack! Each player takes a turn to roll the die and then attempts to add the shown waffle or topping piece to the stack to try to win points. Steady hands are essential as the more pieces you knock over, the more pieces your opponents add to their piles and the more points they accumulate. The player with the most points wins!

## WHO IT'S FOR

Perfect for friends, families, and waffle and brunch lovers.

## WHAT'S INSIDE

12 waffle pieces, 24 topping pieces, 1 balancing fork, 1 die, and EFIGS instructions. Made using FSC plywood + MDF. Packaging is 75% recycled material.

## WAFFLE TOPPLE™

### Package size:

4.1 x 6.9 x 2 in  
175 x 105 x 50 mm

### Carton Quantity: 24

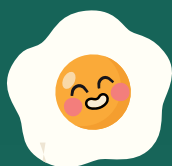
0810073342354

\$15.00 sugg retail



2+  6+  20  MINS

# THE SMASH-HIT CARD Game Packed WITH EXTRA FUN!



## AIM OF GAME

Serving up a brunchier version of our best-selling game Avocado Smash™! Smash correctly to win tasty extras like a fried egg or a slice of tomato to pop atop your Avo Toast token. The player with the most toppings at the end is the winner. Packed with lots more cards and a fresh menu of rules, it's time to boost your breakfast!

## WHO IT'S FOR

Friends, families, breakfast and brunch lovers, and Avocado Smash fans.

## WHAT'S INSIDE

91 Game cards, 8 Avocado Toast tokens, 15 Toppings tokens, and EFIGS instructions. Packaged in an extra large avocado-shaped case with party hat and holofoil sticker.

## AVOCADO SMASH™ PARTY EDITION

Packaged in an extra large avocado-shaped case with party hat and holofoil sticker.

### Package size:

4.3 x 7 x 3 in  
180 x 105 x 75 mm

### Carton Quantity: 12

0810073340466

\$20.00 sugg retail



2-8 6+ 15 MINS







**AIM OF GAME**

In this spec-taco-lar dice-rolling, push-your-luck game, you'll be at the edge of your plate as you roll the dice to attempt to collect your delicious dishes! The aim is to win tasty food cards and drinks by rolling the right ingredients that match the dish you're trying to make. The more correct ingredients you roll, the harder it will be for another player to challenge you—but rolling too many wrong ingredients will make you go bust and lose your card! Each food card you collect will earn you points, and a complete meal gets you bonuses! The player with the highest-scoring cards in their pile is the winner, so it's best to play hungry!

**WHO IT'S FOR**

Perfect for friends, families, and anyone loco about tacos.

**WHAT'S INSIDE**

32 Food cards, 12 Drink cards, 8 Ingredient dice, and instructions. Printed using FSC paper and soy inks.



**TACO TIME™**

**Package size:**  
5 x 4 x 2.75 in  
100 x 129 x 70 mm

**Carton Quantity:** 36

**0810073342422**

**\$15.00** sugg retail

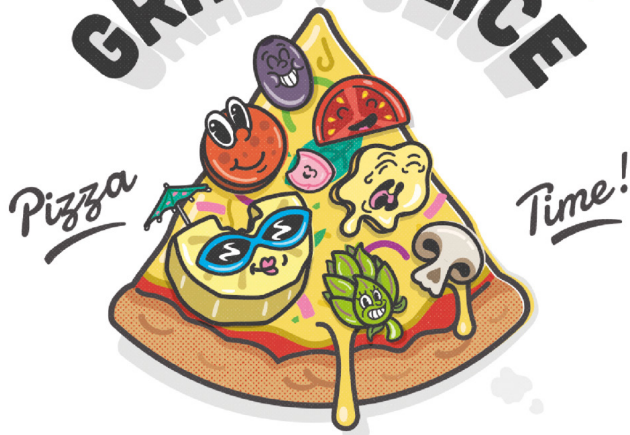
2-6 8+ 30 MINS



Ridley's GAMES

**GRAB A SLICE**

LOADED WITH 100% FUN!



**AIM OF GAME**

Get a pizza' the action! In this supreme pizza game with all the tasty toppings, try to win points by rolling the dice to match the good type of toppings on a pizza card. But if you roll too many of the bad ingredients listed, you'll go bust for that turn! The player with the most points wins the game as the ultimate pizza aficionado-dough!

**WHO IT'S FOR**

Perfect for friends, families, pizza lovers, and anyone who loves a cheesy party game.



**WHAT'S INSIDE**

Includes 44 Pizza cards, 6 Pizza Slice cards, 6 dice, and EFIGS instructions. Printed using FSC paper and soy inks.

**GRAB A SLICE™**

**Package size:**  
7.5 x 7.5 x 1.5 in  
190 x 190 x 38 mm

**Carton Quantity:** 24

**0810073341685**

**\$15.00** sugg retail



2-6 PLAYERS 8+ AGES **THE SUPREME PIZZA GAME WITH ALL THE TASTY TOPPINGS!**



**LIST OR TWIST**

Fast-paced category guessing game for teamplay fun. Game includes 200 cards (with 400 categories), 1 timer, 1 score slider, 1 score pad, 2 pencils, and instructions. Ages 8+. 4-10 players. Average 30 mins gameplay.

**Package size:**

8.5 x 3.5 x 2.2 in  
90 x 215 x 55 mm

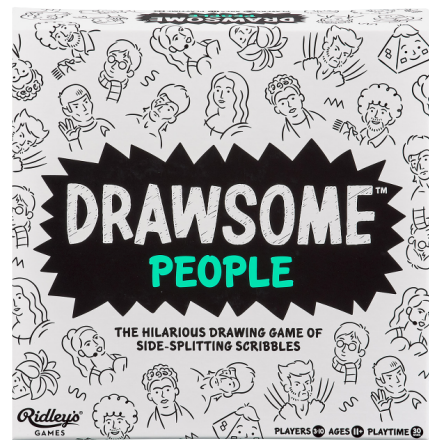
**Carton Quantity:** 24

0810073340534

\$15.00 sugg retail



0 810073 340534



**DRAWSOME™ PEOPLE**

Drawing game featuring cards with challenges to draw celebrities, characters, and fellow players. Contains Challenge cards, Bonus cards, scoring tokens, drawing boards, guessing boards, pens, cloths, 60-second timer, game die, and instructions. Ages 11+. 3-10 players. Average 30 mins gameplay.

**Package size:**

8.9 x 8.9 x 2.6 in  
226 x 226 x 65 mm

**Carton Quantity:** 16

5055923773086

\$20.00 sugg retail



5 055923 773086 >



**AIM OF GAME**

See how well the group knows the nearly-wed and prepare for highly entertaining results! This joyful pre-wedding party game for friends and adult family members is quick to understand and will have you laughing at some very questionable and hilarious answers! The first round is all about trying to answer in the same way as the nearlywed, but you only know the first letter of the word! Each matching answer earns you a point! In the second round, the nearly-wed will answer questions based on themselves, and the other players will be tested on how well they know them! The player with the most points at the end of the game wins!

**WHO IT'S FOR**

Perfect to play with friends and adult family members.

**WHAT'S INSIDE**

150 Forget Me Knot cards, 50 Tying the Knot cards, 40 tokens, answer pad, 1 pencil, and instructions. Printed using FSC paper and soy inks.

2+ 25 MINS

ADULT PARTY GAME

**TYING THE KNOT™**

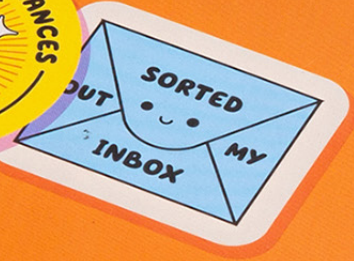
Package size:  
5.5 x 6.3 x 2.4 in  
160 x 140 x 60 mm  
Carton Quantity: 36  
**0810073342446**  
\$18.00 sugg retail



PARTY GAME

# ADULTING™

THE HILARIOUS NIGHT IN  
FOR FULLY GROAN-UP ADULTS

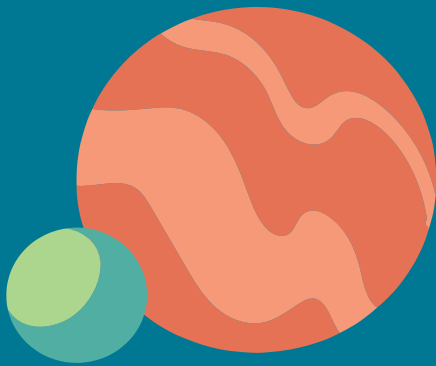


3-5 PLAYERS | 20 MINS

# ADULTING™

3-5 PLAYERS | 20 MINS





**ORB'LITERATED DRINKING GAME  
CDU OF 6**

Space-themed drinking card game in a circular tin. Includes 55 Game cards, 6 Drinks Coasters, and instructions. Ages 21+. 2-6 players. Average 15 mins gameplay.

**CDU size:**

4.6 x 8.5 x 6.1 in  
215 x 118 x 155 mm

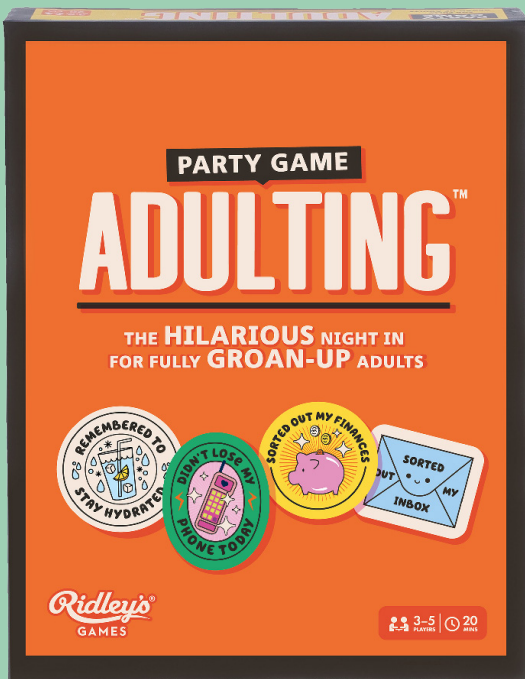
**Package size:**

4.5 x 4.3 x 1 in  
110 x 115 x 25 mm

**Carton Quantity:** 24  
**0810073340978**

**\$84.00** sugg retail

For internal store use only.  
Cannot be ordered in individual units.  
0810073340558  
**\$14.00** sugg retail



**AIM OF GAME**

First, pick a badge randomly and read it to yourself without showing the other players. Then you must do anything you can think of to earn that badge while other players try to guess what achievement your badge is for. This isn't charades though—you can speak, make noise and use nearby stuff like furniture, props, and even people! The player who has earned the most badges and pins by the end of the game is the ultimate adult!

**WHO IT'S FOR**

Perfect for millennials and any other adults who still don't know how to throw a proper dinner party.

**WHAT'S INSIDE**

Includes 50 Merit Badges, 25 lapel stars, 5 pennant flag boards, grab bag, and instructions.

**ADULTING™**

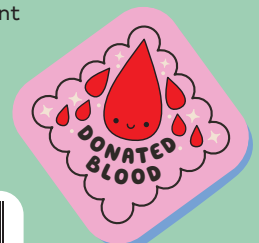
**Package size:**

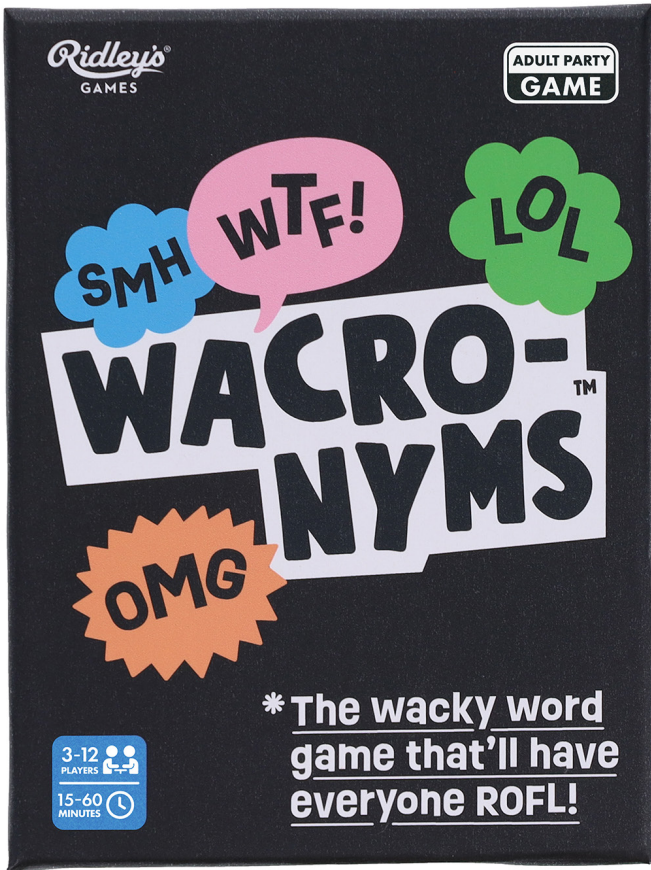
6.3 x 8 x 1.6 in  
205 x 160 x 40 mm

**Carton Quantity:** 12

**0810073341623**

**\$15.00** sugg retail





### AIM OF GAME

Grab your friends (this game is definitely NSFW!) and compete FTW by creating the wildest and wittiest acronyms, abbreviations, and initialisms. Reveal the Topic—it could be a familiar situation, wacky concept, or heartfelt (or not!) emotion—and draw the number of Letter cards shown. TW: Players might reveal TMI as they fill in the blanks. The tricky bit? You have to use all the letters to make your Wacronym, but the good news is you choose the order. Everyone writes a Wacronym on the answer pad and gives it to the judge. Only the judge can decide who played a GG, but IOO the more people LOL at your answer, the more likely you are to win. Just when you think you're getting the hang of it, out comes a Special Round card to mix up the rules! And you can use the blank cards to CYO, too. The first player to win five rounds is crowned the champion!

### WHO IT'S FOR

Perfect for parties with friends, Wacronyms is suitable for adults only.

### WHAT'S INSIDE

120 Topic cards, 94 Letter cards, 7 Special Round cards, 5 blank cards, answer pad, instructions. Made using FSC paper and soy inks. Recyclable.

### WACRONYMS

**Package size:**  
3.8 x 5.1 x 2.2 in  
130 x 97 x 55 mm

**Carton Quantity:** 36  
**0810073342439**  
**\$16.00** sugg retail





**DRUNKEN PIRATES DRINKING GAME  
CDU OF 6**

Pirate-themed drinking card game. Includes 54 Game cards, 1 eyepatch, and instructions. Packaged in a bottle-shaped tin. Ages 21+. 2+ players. Average 15 mins gameplay.

**CDU size:**  
6.5 x 8.5 x 3.9 in  
215 x 165 x 98 mm

**Package size:**  
3 x 5.3 x 1.2 in  
135 x 77 x 31 mm

**Carton Quantity:** 48  
**0810073340138**

**\$60.00** sugg retail    0 810073 340138

For internal store use only.  
Cannot be ordered in individual units.  
5055923781104  
\$10.00 sugg retail






**RING OF FIRE DRINKING GAME CDU OF 6**

Drinking card game also known as 'Kings'. Includes 54 waterproof game cards and instructions. Packaged in a bottle-shaped tin. Ages 21+. 2+ players. Average 15 mins gameplay.

**CDU size:**  
6.5 x 8.5 x 3.9  
215 x 165 x 98 mm

**Package size:**  
3 x 5.3 x 1.2 in  
135 x 77 x 31 mm

**Carton Quantity:** 48  
**0810073340107**

**\$60.00** sugg retail    0 810073 340107

For internal store use only.  
Cannot be ordered in individual units.  
5055923776223  
\$10.00 sugg retail





# JIGSAWS, TRIVIA, PLAYING CARDS & JOKES

Classic fun for everyone to show off their creativity, test their knowledge, share some laughs, and play their favorite game.

**COCKTAIL LOVER'S  
500-PIECE JIGSAW PUZZLE**


Cocktail-themed jigsaw puzzle. 500 pieces. Hand illustrated artwork showing a variety of delicious drinks from around the world. Includes poster guide with cocktail recipes. Packaged in a card tube. Made using 60% recycled materials and 40% FSC paper. Printed using soy inks.

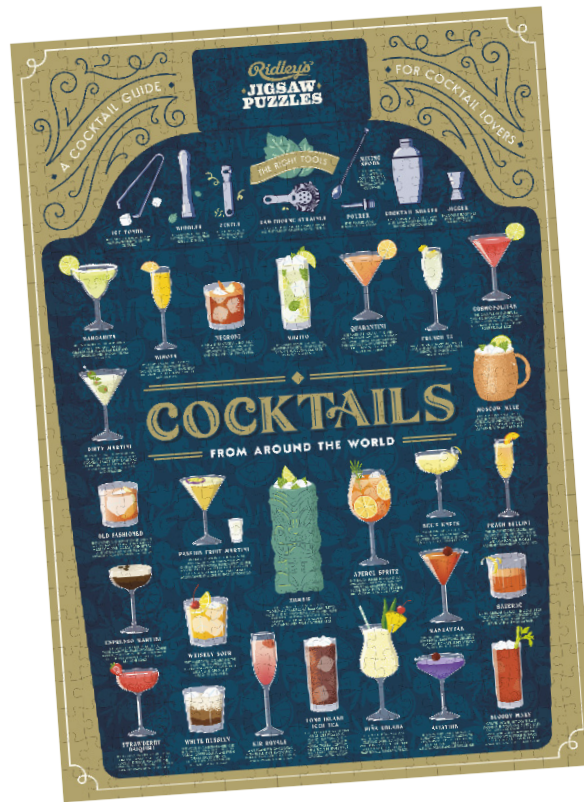
**Jigsaw size:**  
13.8 x 19.7 in  
500 x 350 mm

**Package size:**  
4.1 x 7.9 x 4.1 in  
200 x 103 x 103 mm

**Carton Quantity:** 12

**0810073342507**

**\$18.00** sugg retail 



**COCKTAIL LOVER'S  
PLAYING CARDS CDU OF 6**

Set of 54 playing cards in tin packaging. Featuring illustrations of 48 cocktails and information on key ingredients and equipment. Printed using FSC paper and soy inks.

**CDU size:**  
5.8 x 4.2 x 3.4 in  
107 x 148 x 87 mm

**Package size:**  
3.2 x 4 x 0.9 in  
102 x 82 x 23 mm

**Carton Quantity:** 48

**9781797229683**

**\$60.00** sugg retail  



For internal store use only.  
Cannot be ordered in individual units.  
9781797229157  
**\$10.00** sugg retail





### CHEESE & WINE PLAYING CARDS CDU OF 6

Set of 54 playing cards in tin packaging. Featuring beautiful illustrated artwork of a variety of cheese and wine pairings. Printed using FSC paper and soy inks.

**CDU size:**  
5.8 x 4.2 x 3.4 in  
107 x 148 x 87 mm

**Package Size:**  
3.2 x 4 x 0.9 in  
102 x 82 x 23 mm

**Carton Quantity:** 48  
**0810073342156**

**\$60.00** sugg retail  



For internal store use only.  
Cannot be ordered in individual units.  
**0810073341418**  
**\$10.00** sugg retail



### CHEESE & WINE 500-PIECE JIGSAW PUZZLE

Cheese & wine-themed jigsaw puzzle. 500 pieces. Includes poster guide. Packaged in card tube.

**Jigsaw size:**  
13.8 x 19.7 in  
500 x 350 mm

**Package size:**  
4.1 x 7.9 x 4.1 in  
200 x 103 x 103 mm

**Carton Quantity:** 12  
**0810073340640**

**\$18.00** sugg retail 





This 500-piece jigsaw puzzle and 54 playing cards are the perfect gift for any beer lover. Featuring a collection of traditional and contemporary beers from around the world, with information about the brewing process and famous regions.



**BEER LOVER'S  
500-PIECE JIGSAW PUZZLE**

Beer-themed jigsaw puzzle. 500 pieces. Hand illustrated artwork showing a variety of beers from across the world and the brewing process. Includes poster guide. Packaged in card tube.

**Jigsaw size:**

13.8 x 19.7 in  
500 x 350 mm

**Package size:**

4.1 x 7.9 x 4.1 in  
200 x 103 x 103 mm

**Carton Quantity:** 12  
**5055923773093**

**\$18.00** sugg retail



**BEER LOVER'S PLAYING CARDS  
CDU OF 6**

Set of 54 playing cards packaged in a bottle-shaped tin. Features hand illustrated artwork.

**CDU size:**

6.5 x 8.5 x 3.9 in  
215 x 165 x 98 mm

**Package size:**

3 x 5.3 x 1.2 in  
135 x 77 x 31 mm

**Carton Quantity:** 48

**0810073340077**

**\$60.00** sugg retail



For internal store use only.  
Cannot be ordered in individual units.  
**5055923776117**

**\$10.00** sugg retail

# GIN LOVERS



Cocktail hour has never been so much fun! Our gin-inspired 500-piece jigsaw puzzle and Gin Rummy playing cards feature beautiful hand drawn illustrations of gin drinks, botanicals, spices, and fun gin facts. Perfect for gin lovers!



## GIN LOVER'S 500-PIECE JIGSAW PUZZLE

Gin-themed jigsaw puzzle. 500 pieces. Hand illustrated artwork showing a variety of gin types, botanicals, and the distilling process. Includes poster guide. Packaged in card tube.

**Jigsaw size:**  
13.8 x 19.7 in  
500 x 350 mm

**Package size:**  
4.1 x 7.9 x 4.1 in  
200 x 103 x 103 mm

**Carton Quantity:** 12  
**5055923757932**

**\$18.00** sugg retail



5 055923 757932 >



CAN BE USED  
FOR ALL YOUR  
FAVOURITE  
CARD  
GAMES

## GIN RUMMY PLAYING CARDS CDU OF 6

Set of 54 playing cards packaged in a bottle-shaped tin. Featuring hand illustrated artwork. Includes instructions for Gin Rummy card game.

**CDU size:**  
6.5 x 8.5 x 3.9 in  
215 x 165 x 98 mm

**Package size:**  
3 x 5.3 x 1.2 in  
135 x 77 x 31 mm

**Carton Quantity:** 48

**0810073340046**

**\$60.00** sugg retail



0 810073 340046

For internal store use only.  
Cannot be ordered in individual units.  
**5055923757918**  
**\$10.00** sugg retail



Whisky lovers raise a toast to our whisky inspired 500-piece jigsaw puzzle and 54 playing cards featuring illustrations of ingredients and whisky facts.



### WHISKY LOVER'S 500-PIECE JIGSAW PUZZLE

Whisky-themed jigsaw puzzle. 500 pieces.  
Hand illustrated artwork. Includes poster guide.  
Packaged in card tube.

**Jigsaw size:**

13.8 x 19.7 in  
500 x 350 mm

**Package size:**

4.1 x 7.9 x 4.1 in  
200 x 103 x 103 mm

**Carton Quantity:** 12

**5055923765821**

**\$18.00** sugg retail



5 055923 765821 >

### WHISKY LOVER'S PLAYING CARDS CDU OF 6

Set of 54 playing cards packaged in a  
whisky bottle-shaped tin. Featuring hand  
illustrated artwork of whisky ingredients,  
casks, and processes.

**CDU size:**

6.5 x 8.5 x 3.9 in  
215 x 165 x 98 mm

**Package size:**

3 x 5.3 x 1.2 in  
135 x 77 x 31 mm

**Carton Quantity:** 48

**0810073340053**

**\$60.00** sugg retail



0 810073 340053

For internal store use only.

Cannot be ordered in  
individual units.

5055923765760

**\$10.00** sugg retail



FOR THE  
**DONUT LOVERS**



**DONUT LOVER'S 1000-PIECE  
JIGSAW PUZZLE**

Donut-themed jigsaw puzzle. 1000 pieces.  
Hand illustrated artwork of tasty donut treats.  
Includes poster guide. Packaged in a card tube.

**Jigsaw size:**

21.7 x 27.6 in  
700 x 550 mm

**Package size:**

4.5 x 12 x 4.5 in  
306 x 115 x 115 mm

**Carton Quantity:** 12

**5055923766293**

**\$20.00** sugg retail



5 055923 766293 >



**DONUT LOVER'S PLAYING CARDS  
CDU OF 6**

Set of 54 playing cards in novelty  
donut-shaped tin packaging. Featuring  
hand illustrated donut artwork.

**CDU size:**

4.8 x 8 x 7 in  
210 x 117 x 170 mm

**Package size:**

4.5 x 4.3 x .9 in  
110 x 115 x 22 mm

**Carton Quantity:** 48

**0810073340060**

**\$60.00** sugg retail



0 810073 340060

For internal store use only.

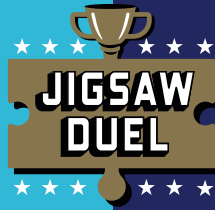
Cannot be ordered in individual units.

**5055923766286**

**\$10.00** sugg retail

2 Player

2\* ONLY 70 PIECE PUZZLES ONLY 1 FINAL PIECE!



# SUGAR SHOWDOWN

DONUT

VS

CUPCAKE



# COCKTAIL CLASH

PIÑA COLADA

VS

MANHATTAN



## JIGSAW DUEL SUGAR SHOWDOWN

Throw down in a jigsaw duel with this competitive puzzle game. Includes two dessert-themed 70-piece jigsaws (1 donut, 1 cupcake) with only one final piece (the cherry!) that fits both puzzles. Comes with two picture guides, a wooden stand to hold the prized double-sided final piece, and EFIGS instructions. Printed using vegetable inks on FSC paper.

**Package size:**

6.7 x 8 x 1.5 in  
202 x 169 x 39 mm

**Carton Quantity:** 24

**0810073341715**

**\$12.00** sugg retail



0810073341715

## JIGSAW DUEL COCKTAIL CLASH

Throw down in a jigsaw duel with this competitive puzzle game. Includes two cocktail-themed 70-piece jigsaws (1 Piña Colada, 1 Manhattan) with only one final piece (the cocktail napkin!) that fits both puzzles. Comes with two picture guides, a wooden stand to hold the prized double-sided final piece, and EFIGS instructions. Printed using vegetable inks on FSC paper.

**Package size:**

6.7 x 8 x 1.5 in  
202 x 169 x 39 mm

**Carton Quantity:** 24

**0810073341708**

**\$12.00** sugg retail

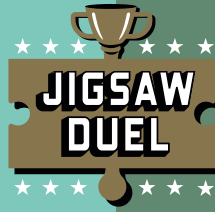


0810073341708



2 Player 

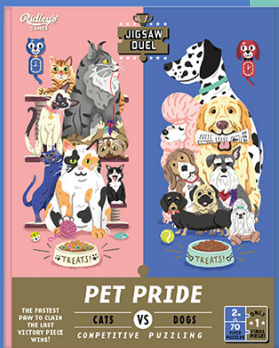
2\* ONLY  
70 PIECE PUZZLES ★ 1 ★  
FINAL PIECE!



Ridley's GAMES

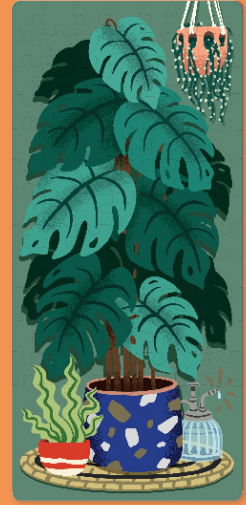
# PET PRIDE

CATS VS DOGS



# HOUSEPLANTS

CACTI VS TROPICAL



## JIGSAW DUEL PET PRIDE

Throw down in a jigsaw duel with this competitive puzzle game. Includes two pet-themed 70-piece jigsaws (1 dog, 1 cat) with only one final piece (the food bowl!) that fits both puzzles. Comes with two picture guides, a wooden stand to hold the prized double-sided final piece, and EFIGS instructions. Printed using vegetable inks on FSC paper.

### Package size:

6.7 x 8 x 1.5 in  
202 x 169 x 39 mm

Carton Quantity: 24

0810073341357

\$12.00 sugg retail



0 810073 341357

## JIGSAW DUEL HOUSEPLANTS

Throw down in a jigsaw duel with this competitive puzzle game. Includes two house plant-themed 70-piece jigsaws (1 cactus, 1 tropical) with only one final piece (the pots!) that fits both puzzles. Comes with two picture guides, a wooden stand to hold the prized double-sided final piece, and EFIGS instructions. Printed using vegetable inks on FSC paper.

### Package size:

6.7 x 8 x 1.5 in  
202 x 169 x 39 mm

Carton Quantity: 24

0810073341364

\$12.00 sugg retail



0 810073 341364

# HOUSE PLANTS

## Jigsaw Puzzle



### HOUSE PLANTS 1000-PIECE JIGSAW PUZZLE

House plant-themed jigsaw puzzle. 1000 pieces. Hand-illustrated artwork showing a variety of popular house plants. Includes poster guide. Packaged in card tube.

**Jigsaw size:**  
21.7 x 27.6 in  
700 x 550 mm

**Package size:**  
4.5 x 12 x 4.5 in  
306 x 115 x 115 mm

**Carton Quantity:** 12  
0810073340626

\$20.00 sugg retail



0 810073 340626





# HOUSE PLANTS

## 54 Illustrated Playing Cards





### HOUSE PLANTS PLAYING CARDS

Set of 54 playing cards in tin packaging. Featuring beautiful illustrated artwork of a variety of house plants and tips to care for them.

**CDU size:**  
5.8 x 4.2 x 3.4 in  
107 x 148 x 87 mm

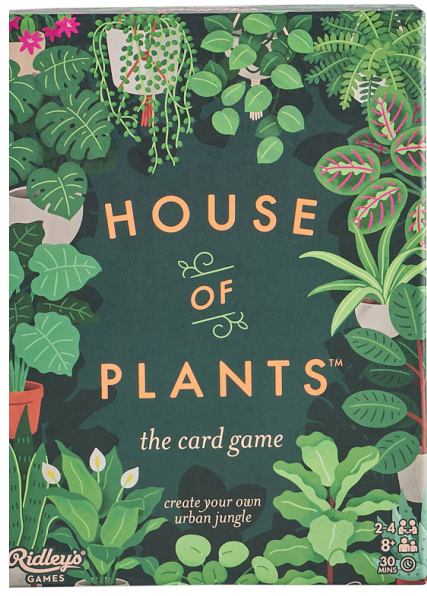
**Package size:**  
3.2 x 4 x 0.9 in  
102 x 82 x 23 mm

**Carton Quantity:** 48  
**0810073341524**

**\$60.00** sugg retail  



**For internal store use only.**  
Cannot be ordered in individual units.  
**0810073341395**  
**\$10.00** sugg retail



### HOUSE OF PLANTS CARD GAME

Plant-themed card game. Includes 80 Resource cards, 60 Money Notes, 20 Plant cards, 4 player mats, and EFIGS instructions. Ages 8+. 2-4 players. Average 30 mins gameplay.

**Package size:**  
5.9 x 7.9 x 2 in  
200 x 150 x 50 mm

**Carton Quantity:** 24  
**5055923781081**  
**\$15.00** sugg retail





# INSPIRATIONAL • WOMEN •

## COLLECTION

From Rosa Parks to Jane Goodall, be inspired by dozens of incredible women across history with this Jigsaw Puzzle, Trivia Game, and Playing Cards collection.



### INSPIRATIONAL WOMEN 1000-PIECE JIGSAW PUZZLE

1000-piece circular jigsaw puzzle featuring illustrations of 54 inspirational women and their achievements. Includes poster guide. Packaged in card tube.

**Jigsaw size:**  
26.8 x 26.8 in  
680 x 680 mm

**Package size:**  
4.5 x 12 x 4.5 in  
306 x 115 x 115 mm

**Carton Quantity:** 12  
**5055923776124**  
**\$20.00** sugg retail



### INSPIRATIONAL WOMEN PLAYING CARDS CDU OF 6

Set of 54 playing cards in tin packaging. Featuring illustrations of inspirational women and their achievements.

**CDU size:**  
3.4 x 8 x 5.8 in  
203 x 86 x 148 mm

**Package size:**  
4 x 3.2 x 0.9 in  
102 x 82 x 23 mm

**Carton Quantity:** 48

**0810073340084**

**\$48.00** sugg retail



For internal store use only.  
Cannot be ordered in individual units.

**5055923776131**  
**\$8.00** sugg retail



### INSPIRATIONAL WOMEN TRIVIA GAME

Set of 80 Trivia Quiz cards featuring illustrations of inspirational women and questions about their achievements.

**Package size:**  
3.6 x 3.5 x 1.5 in  
88 x 91 x 38 mm

**Carton Quantity:** 24  
**5055923778883**  
**\$8.00** sugg retail







**TRAVEL DESTINATIONS  
PLAYING CARDS CDU OF 6**

Set of 54 playing cards in tin packaging. Featuring illustrations of famous landmarks, cities, and countries around the globe. Printed using FSC paper and soy inks.

**CDU size:**  
5.8 x 4.2 x 3.4 in  
107 x 148 x 87 mm

**Package size:**  
3.2 x 4 x 0.9 in  
102 x 82 x 23 mm

**Carton Quantity:** 48  
**0810073342484**  




For internal store use only.  
Cannot be ordered in individual units.  
**0810073342477**  
**\$10.00** sugg retail

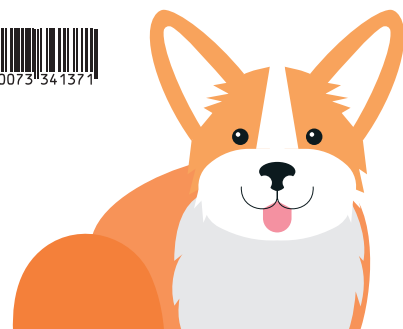
**50 AWE-INSPIRING TRAVEL  
DESTINATIONS BUCKET LIST  
1000-PIECE PUZZLE**

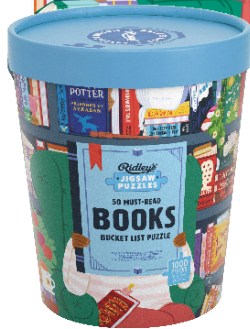
1000-piece travel-themed jigsaw puzzle. Features illustrations of 50 bucket list travel destinations. Includes poster guide. Comes in novelty bucket packaging. Made using 80% recycled materials and 20% FSC paper. Printed using soy inks.

**Jigsaw size:**  
21.7 x 27.6 in  
700 x 550 mm

**Package size:**  
6.4 x 7.5 x 4.9 in  
191 x 162 x 125 mm

**Carton Quantity:** 9  
**0810073341371**   
**\$22.00** sugg retail





**50 MUST-READ BOOKS OF THE WORLD BUCKET LIST 1000-PIECE PUZZLE**

1000-piece reading-themed jigsaw puzzle. Features illustrations of 50 bucket list book recommendations. Includes poster guide. Comes in novelty bucket packaging. Made using 80% recycled materials and 20% FSC paper. Printed using soy inks.

**Jigsaw size:**  
21.7 x 27.6 in  
700 x 550 mm  
**Package size:**  
6.4 x 7.5 x 4.9 in  
191 x 162 x 125 mm  
**Carton Quantity:** 9  
**0810073341388**  
**\$22.00** sugg retail



**50 MUST-WATCH MOVIES BUCKET LIST 1000-PIECE PUZZLE**

1000-piece movie-themed jigsaw puzzle. Features illustrations of 50 bucket list movie recommendations. Includes poster guide. Comes in novelty bucket packaging. Made using 80% recycled materials and 20% FSC paper. Printed using soy inks.

**Jigsaw size:**  
21.7 x 27.6 in  
700 x 550 mm  
**Package size:**  
6.4 x 7.5 x 4.9 in  
191 x 162 x 125 mm  
**Carton Quantity:** 9  
**0810073342491**  
**\$22.00** sugg retail



**50 MUST-SEE MUSICALS BUCKET LIST 1000-PIECE PUZZLE**

1000-piece musicals-themed jigsaw puzzle. Features illustrations of 50 bucket list musical recommendations. Includes poster guide. Comes in novelty bucket packaging. Made using 80% recycled materials and 20% FSC paper. Printed using soy inks.

**Jigsaw size:**  
21.7 x 27.6 in  
700 x 550 mm  
**Package size:**  
6.4 x 7.5 x 4.9 in  
191 x 162 x 125 mm  
**Carton Quantity:** 9  
**9781797229133**  
**\$22.00** sugg retail





**COSTUMED CATS MEMORY GAME**

Memory card game where you try to match cats and their costumed companions. Includes 50 cards and instructions.

**Package size:**

7.1 x 5.7 x 2 in  
145 x 180 x 50 mm

**Carton Quantity: 24**

**5055923776148**

**\$13.00** sugg retail



**DRESSED UP DOGS MEMORY GAME**

Memory card game where you try to match dogs and their dressed up companions. Includes 50 cards and instructions.

**Package size:**

7.1 x 5.7 x 2 in  
145 x 180 x 50 mm

**Carton Quantity: 24**

**5055923776155**

**\$13.00** sugg retail







**CAT LOVER'S 1000-PIECE JIGSAW PUZZLE**

Features hand illustrated artwork of cats and characteristics of each breed. Includes a poster guide. Packaged in a card tube.

**Jigsaw size:**  
21.7 x 27.6 in  
700 x 550 mm

**Package size:**  
4.5 x 12 x 4.5 in  
306 x 115 x 115 mm

**Carton Quantity:** 12

**5055923785751**

**\$20.00** sugg retail



5 055923 785751 >



**DOG LOVER'S 1000-PIECE JIGSAW PUZZLE**

Features hand illustrated artwork of dogs and characteristics of each breed. Includes a poster guide. Packaged in a card tube.

**Jigsaw size:**  
21.7 x 27.6 in  
700 x 550 mm

**Package size:**  
4.5 x 12 x 4.5 in  
306 x 115 x 115 mm

**Carton Quantity:** 12

**5055923785768**

**\$20.00** sugg retail



5 055923 785768 >



**CAT LOVER'S PLAYING CARDS CDU OF 12**

Set of 54 playing cards in tin packaging. Featuring beautiful hand illustrated artwork of feline friends.

**CDU size:**  
10.2 x 6.4 x 12.2 in  
162 x 260 x 310 mm

**Package size:**  
3.2 x 4 x 0.9 in  
102 x 80 x 22 mm

**Carton Quantity:** 48

**0810073340145**

**\$96.00** sugg retail



0 810073 340145

For internal store use only.  
Cannot be ordered in individual units  
5055923785775  
\$8.00 sugg retail



**DOG LOVER'S PLAYING CARDS CDU OF 12**

Set of 54 playing cards in tin packaging. Featuring beautiful hand illustrated artwork of man's best friend.

**CDU size:**  
10.2 x 6.4 x 12.2 in  
162 x 260 x 310 mm

**Package size:**  
3.2 x 4 x 0.9 in  
102 x 80 x 22 mm

**Carton Quantity:** 48

**0810073340152**

**\$96.00** sugg retail



0 810073 340152

For internal store use only.  
Cannot be ordered in individual units  
5055923785782  
\$8.00 sugg retail






**ENDANGERED WORLD  
1000-PIECE JIGSAW PUZZLE**

Nature-themed circular jigsaw puzzle. 1000 pieces. Features hand illustrated artwork of endangered species and habitats. Includes poster guide. Packaged in a card tube.

**Jigsaw size:**  
26.8 x 26.8 in  
680 x 680 mm

**Package size:**  
4.5 x 12 x 4.5 in  
305 x 115 x 115 mm

**Carton Quantity: 12**  
**5055923781180**  
**\$20.00 sugg retail** 




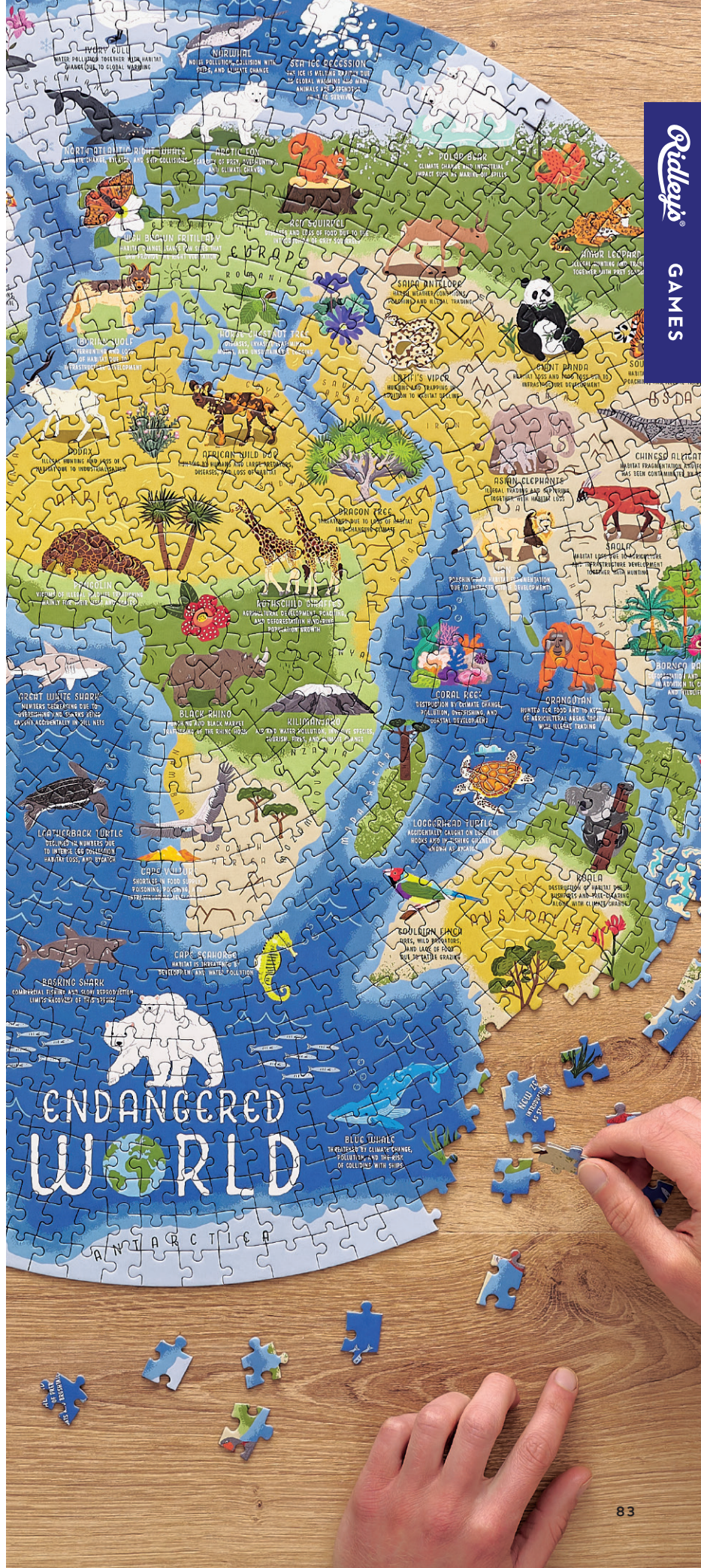
**BIRD LOVER'S  
1000-PIECE JIGSAW PUZZLE**

Bird-themed circular jigsaw puzzle. 1000 pieces. Features hand-illustrated artwork of birds. Includes a map with information about migration, facts about the birds, and where they take flight. Packaged in a card tube.

**Jigsaw Size:**  
26.8 x 26.8 in  
680 x 680 mm

**Package Size:**  
4.5 x 12 x 4.5 in  
305 x 115 x 115 mm

**Carton Quantity: 12**  
**9781797229140**  
**\$20.00 sugg retail** 





**STREET FOOD  
1000-PIECE JIGSAW PUZZLE**

Food-themed circular jigsaw puzzle. 1000 pieces. Features hand illustrated artwork of street food from around the world. Includes poster guide. Packaged in a card tube.

**Jigsaw size:**  
26.8 x 26.8 in  
680 x 680 mm

**Package size:**  
4.5 x 12 x 4.5 in  
306 x 115 x 115 mm

**Carton Quantity: 12**  
**5055923781173**

**\$20.00 sugg retail**



**MAP OF THE STARS  
PLAYING CARDS CDU OF 6**

Set of 54 playing cards in tin packaging. Featuring beautiful illustrated artwork of stars and constellations.

**CDU size:**  
5.8 x 4.2 x 3.4 in  
107 x 148 x 87 mm

**Package size:**  
3.2 x 4 x 0.9 in  
102 x 82 x 23 mm

**Carton Quantity: 48**  
**0810073342163**

**\$60.00 sugg retail**



For internal store use only. **Cannot be ordered in individual units**

**0810073341777**

**\$10.00 sugg retail**



**MAP OF THE STARS 1000-PIECE  
JIGSAW PUZZLE**

Star-themed circular jigsaw puzzle. 1000 pieces. Features hand illustrated artwork of constellations. Includes poster guide. Packaged in a card tube.

**Jigsaw size:**  
26.8 x 26.8 in  
680 x 680 mm

**Package size:**  
4.5 x 12 x 4.5 in  
306 x 115 x 115 mm

**Carton Quantity: 12**  
**0810073340633**

**\$20.00 sugg retail**



# COFFEE LOVERS



THE  
PERFECT  
GIFT  
FOR THE  
CAFFEINE  
CRAZY!



## COFFEE LOVER'S 500-PIECE JIGSAW PUZZLE

Coffee-themed jigsaw puzzle. 500 pieces. Hand illustrated artwork showing a variety of coffee drinks. Includes poster guide. Packaged in card tube.

### Jigsaw size:

13.8 x 19.7 in  
500 x 350 mm

### Package size:

4.1 x 7.9 x 4.1 in  
200 x 103 x 103 mm

### Carton Quantity: 12

5055923773109

\$18.00 sugg retail



**FESTIVE CURIOSITIES  
200-PIECE JIGSAW PUZZLE**

200-piece holiday-themed jigsaw puzzle. Features illustrations of familiar figures, classic tales, and charming oddities making this the ideal gift for fans of the festive season who are looking for a fun activity to put together in an afternoon or evening. Comes in compact giftable tube that is easily packed away to complete again next year! Made using 70% recycled materials and 30% FSC paper. Printed using soy inks.

**Jigsaw size:**


13.8 x 7.9 in  
200 x 350 mm

**Package size:**

3.7 x 5.1 x 3.7 in  
130 x 93 x 93 mm

**Carton Quantity: 12**

**9781797231891**

**\$10.00 sugg retail** 



**SPOOKY CURIOSITIES  
200-PIECE JIGSAW PUZZLE**

200-piece halloween-themed jigsaw puzzle. Features illustrations of occult ornaments, mysterious brews, and intriguing oddities making this the ideal gift for fans of the spooky season who are looking for a fun activity to put together in an afternoon or evening. Comes in compact giftable tube that is easily packed away to complete again next year! Made using 70% recycled materials and 30% FSC paper. Printed using soy inks.

**Jigsaw size:**


13.8 x 7.9 in  
200 x 350 mm

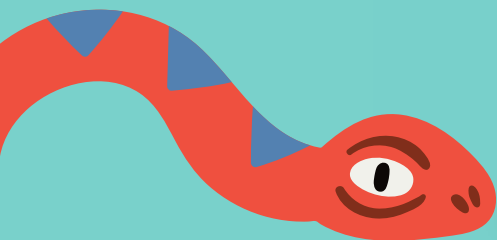
**Package size:**

3.7 x 5.1 x 3.7 in  
130 x 93 x 93 mm

**Carton Quantity: 12**

**9781797231907**

**\$10.00 sugg retail** 



# TRIVIA TAPES



**1970S MUSIC TRIVIA GAME CDU OF 6**  
70s music-themed trivia game. Includes 40 Question cards and instructions.

**CDU size:**  
4.6 x 3.7 x 6.4 in  
94 x 118 x 162 mm

**Package size:**  
3.3 x 4.4 x 1 in  
112 x 84 x 25 mm

**Carton Quantity:** 48

**9781797229676**

**\$60.00 sugg retail**  



For internal store use only.  
Cannot be ordered in individual units.  
9781797228990  
**\$10.00 sugg retail**




**1980S MUSIC TRIVIA GAME CDU OF 6**  
80s music-themed trivia game. Includes 40 Question cards and instructions.

**CDU size:**  
4.6 x 3.7 x 6.4 in  
94 x 118 x 162 mm

**Package size:**  
3.3 x 4.4 x 1 in  
112 x 84 x 25 mm

**Carton Quantity:** 48

**9781797229638**

**\$60.00 sugg retail**  



For internal store use only.  
Cannot be ordered in individual units.  
9781797229218  
**\$10.00 sugg retail**



## GOOD CLEAN FUN

AS PART OF OUR CONTINUING EFFORT TO MAKE RIDLEY'S PRODUCTS MORE ECO-CONSCIOUS, FROM 2024 THE TRIVIA TAPES HAVE TRANSITIONED TO PLASTIC-FREE RECYCLABLE EMBOSSED TIN PACKAGING.



**1990S MUSIC TRIVIA GAME CDU OF 6**  
90s music-themed trivia game. Includes 40 Question cards and instructions.

**CDU size:**  
4.7 x 3.7 x 6.4 in  
94 x 118 x 162 mm

**Package size:**  
3.3 x 4.4 x 1 in  
84 x 112 x 25 mm

**Carton Quantity:** 48

**9781797229645**

**\$60.00 sugg retail**  



For internal store use only.  
Cannot be ordered in individual units.  
9781797229225  
**\$10.00 sugg retail**



**2000S MUSIC TRIVIA GAME CDU OF 6**  
00s music-themed trivia game. Includes 40 Question cards and instructions.

**CDU size:**  
4.7 x 3.7 x 6.4 in  
94 x 118 x 162 mm

**Package size:**  
3.3 x 4.4 x 1 in  
84 x 112 x 25 mm

**Carton Quantity:** 48

**9781797229652**

**\$60.00 sugg retail**  



For internal store use only.  
Cannot be ordered in individual units.  
9781797229232  
**\$10.00 sugg retail**



**2010S MUSIC TRIVIA GAME CDU OF 6**  
10s music-themed trivia game. Includes 40 Question cards and instructions.

**CDU size:**  
4.6 x 3.7 x 6.4 in  
94 x 118 x 162 mm

**Package size:**  
3.3 x 4.4 x 1 in  
112 x 84 x 25 mm

**Carton Quantity:** 48

**9781797229669**

**\$60.00 sugg retail**  



For internal store use only.  
Cannot be ordered in individual units.  
9781797229003  
**\$10.00 sugg retail**

# JOKES + NOVELTIES

Laugh (and cringe!) with our fantastic range of joke sets and inspire endless family fun with our novelty toys and games.



## 100 BIRTHDAY JOKES

100 cheeky puns and sweetly silly jokes. Birthday cake-shaped cards and box. Ages 8+.

**Package size:**

3.7 x 3.4 x 1 in  
94 x 85 x 26 mm

**Carton Quantity:** 24

**9781797229072**

**\$8.00** sugg retail



9 781797 229072



## 100 TOTALLY GROSS JOKES

100 groan-inducing jokes. Slime cauldron-shaped cards and box. Ages 8+.

**Package size:**

3 x 3 x 1 in  
75 x 78 x 27 mm

**Carton Quantity:** 6

**0810073342972**

**\$8.00** sugg retail



0810073342972



## 100 A-MAIZE-ING CORNY JOKES

100 cringe-making corny jokes. Corn-on-the-cob-shaped cards in a corn-shaped box. Ages 8+.

**Package size:**

5.1 x 2.2 x 1.2 in  
67 x 102 x 30 mm

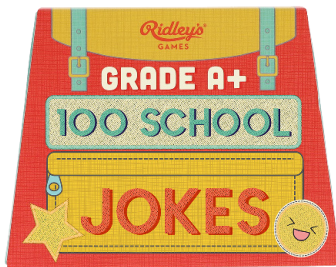
**Carton Quantity:** 24

**5055923752029**

**\$8.00** sugg retail



5 055923 752029 >



## 100 SCHOOL JOKES

100 grade A+ school jokes. Pencil-shaped cards in a novelty backpack-shaped box. Printed using FSC paper and soy inks. Ages 8+.

**Package size:**

3.9 x 3.1 x 1 in  
78 x 100 x 26 mm

**Carton Quantity:** 24

**0810073342347**

**\$8.00** sugg retail



0810073342347



## 100 DAD JOKES

100 un-beer-able dad jokes. Beer glass-shaped cards in a novelty beer can-shaped box. Ages 8+.

**Package size:**

2.6 x 4.3 x 1.2 in  
109 x 66 x 30 mm

**Carton Quantity:** 24

**0810073341401**

**\$8.00** sugg retail



0 810073 341401



## 100 PAW-SOME CAT JOKES

100 purr-fect cat jokes. Cat-shaped cards in a novelty cat-shaped box. Ages 8+.

**Package size:**

3.7 x 3 x 1 in  
64 x 95 x 25 mm

**Carton Quantity:** 24

**5055923757949**

**\$8.00** sugg retail



5 055923 757949 >





**100 KNOCK KNOCK JOKES**

100 classic knock knock jokes. Door-shaped cards in a novelty door-shaped box. Ages 8+.

**Package size:**  
2.6 x 4 x 1.2 in  
102 x 67 x 40 mm

**Carton Quantity:** 24

**5055923751992**

**\$8.00** sugg retail



**100 MUSIC JOKES**

100 pitch perfect music jokes. Cassette-shaped cards in a novelty boombox-shaped box. Printed using FSC paper and soy inks. Ages 8+.

**Package Size:**  
4 x 2.6 x 1 in  
67 x 102 x 25 mm

**Carton Quantity:** 24

**0810073341722**

**\$8.00** sugg retail



**100 GOLF JOKES**

100 hole-in-one golf jokes. Golf ball-shaped cards in a novelty golf cart-shaped box. Printed using FSC paper and soy inks. Ages 8+.

**Package size:**  
3.9 x 3.1 x 1 in  
78 x 100 x 26 mm

**Carton Quantity:** 24

**0810073342330**

**\$8.00** sugg retail



**100 DOG JOKES**

100 pup-tastic dog jokes. Dog-shaped cards in a novelty dog-shaped box. Ages 8+.

**Package size:**  
4.9 x 3 x 1 in  
76 x 124 x 25 mm

**Carton Quantity:** 24

**5055923765838**

**\$8.00** sugg retail



**100 POO JOKES**

100 close-your-nose jokes. Turd-shaped cards in a novelty turd-shaped box. Ages 8+.

**Package size:**  
3.7 x 3.3 x 1 in  
83 x 98 x 29 mm

**Carton Quantity:** 24

**5055923757956**

**\$8.00** sugg retail



**100 CHEESY JOKES**

100 single slice cheesy jokes. Cheese slice-shaped cards in a novelty cheese pack-shaped box. Ages 8+.

**Package size:**  
5.1 x 3.1 x 1 in  
79 x 130 x 26 mm

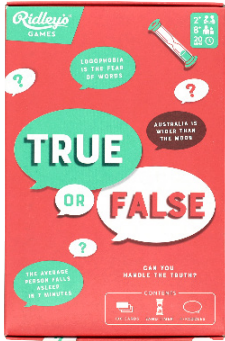
**Carton Quantity:** 24

**5055923757963**

**\$8.00** sugg retail



# FAMILY GAMES



## TRUE OR FALSE GAME

Light strategy 'true or false' family game. Includes 100 Game cards, 4 voting paddles, 1 sand timer, and instructions. Ages 8+. 2+ players. Average 20 mins gameplay.

### Package size:

4.7 x 7.2 x 1 in  
183 x 118 x 27 mm

**Carton Quantity:** 24

**0810073340572**

**\$12.00** sugg retail



0 810073 340572



## BLUFF IT GAME

'Bluff It'-themed strategy family game. Includes 100 Game cards, 1 Call Your Bluff pointer, 1 score pad, 1 pencil, 1 sand timer, and instructions. Ages 8+. Players 2+. Average 20 mins gameplay.

### Package size:

4.7 x 7.2 x 1 in  
183 x 118 x 27 mm

**Carton Quantity:** 24

**5055923712658**

**\$12.00** sugg retail



5 055923 712658



## CHARADES

Charades family game. Includes 100 Game cards, 3 tokens, 1 sand timer, and instructions. Ages 8+. 4+ players. Average 20 mins gameplay.

### Package size:

4.7 x 7.2 x 1 in  
183 x 118 x 27 mm

**Carton Quantity:** 24

**5055923785973**

**\$12.00** sugg retail



5 055923 785973



## AVOCADO SMASH PINBALL

Land the silver balls inside the avocados to score as many points as possible to be crowned Top Avocado. Includes pinball game. Ages 6+.

### Package size:

7.1 x 11.6 x 0.7 in  
295 x 180 x 18 mm

**Carton Quantity:** 12

**5055923776193**

**\$11.00** sugg retail



5 055923 776193



## THAT'S SO... 80S TRIVIA

1000 trivia questions for 80s fans. Contains 200 quiz cards, team score pad, and instructions.

### Package size:

7.7 x 7.7 x 2 in  
195 x 195 x 50 mm

**Carton Quantity:** 12

**5055923752043**

**\$18.00** sugg retail



5 055923 752043



## THAT'S SO... 90S TRIVIA

1000 trivia questions for 90s fans. Contains 200 quiz cards, team score pad, and instructions.

### Package size:

7.7 x 7.7 x 2 in  
195 x 195 x 50 mm

**Carton Quantity:** 12

**5055923752050**

**\$18.00** sugg retail



5 055923 752050



**KAZOO THAT FESTIVE TUNE**

Hum your favorite festive tunes on jazzy kazoo's for your teammates to guess! 100 tune cards, 4 aluminum alloy kazoo's, and instructions. Ages 8+. 2+ players.

**Package size:**  
5.8 x 7.2 x 1.2 in  
182 x 146 x 31 mm

**Carton Quantity:** 24  
**9781797233161**

**\$14.00 sugg retail** 



**KAZOO THAT TUNE**

Kazoo song guessing game. Includes 100 Tune cards, 4 kazoo's, 1 sand timer, and instructions. Ages 8+. 2+ players.

**Package size:**  
5.7 x 7.2 x 1.2 in  
182 x 145 x 30 mm

**Carton Quantity:** 24  
**5055923765883**

**\$10.00 sugg retail** 




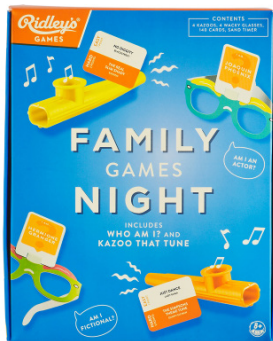
**WHO AM I?**

Name guessing family game. Includes 120 Name cards, 60 Letter cards, 4 pairs wacky card glasses, and instructions.

**Package size:**  
5.7 x 7.1 x 1.4 in  
180 x 145 x 35 mm

**Carton Quantity:** 24  
**5055923765890**

**\$10.00 sugg retail** 



**FAMILY GAMES NIGHT**

Set contains 'Kazoo That Tune' and 'Who Am I?' games. Includes 70 Tune cards, 70 Name cards, 4 kazoo's, 4 pairs wacky card glasses, 1 sand timer, and instructions. Ages 8+. 2+ players.

**Package size:**  
6.5 x 8.2 x 1.4 in  
208 x 166 x 36 mm

**Carton Quantity:** 24  
**5055923786376**

**\$15.00 sugg retail** 




**DING IT!**

Quick-fire question game where opponents can ding you out and steal the round if you hesitate, repeat a previous answer, or say 'Yes' or 'No'. Includes 70 Question cards, 1 bell, and instructions. Ages 8+. 2-5 players.

**Package size:**  
5.7 x 7.1 x 1.8 in  
182 x 146 x 47 mm

**Carton Quantity:** 24  
**5055923785744**

**\$12.00 sugg retail** 



Disney

# THINK FAST!



**DON'T FORGET TO REMEMBER ALL THE ANSWERS!**

**SHOUT AS MANY GUESSES AS YOU CAN THINK OF!**

### DISNEY THINK FAST!

The party game where you know all the answers! Teams compete over three rounds where the answers stay the same, but the clues get tougher until they're down to only one word! Includes 240 game cards, score pad, sand timer, pencil and instructions. Ages 8+. 3+ players. Average 30 mins gameplay.

#### Package size:

7.5 x 7.5 x 2.6 in  
190 x 190 x 65 mm

Carton Quantity: 100

5055923785249

\$24.00 sugg retail

3+ 8+ 30 MINS

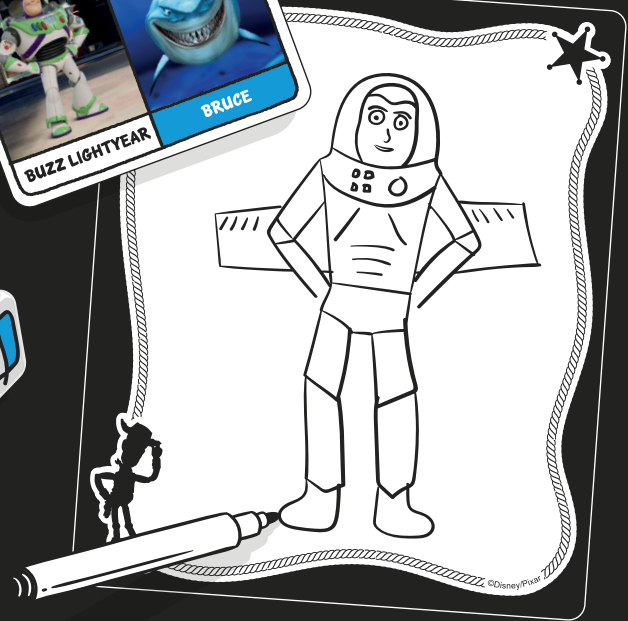
©Disney  
©Disney/Pixar



Disney

# DRAWSOME™

DRAW YOUR FAVOURITE  
DISNEY & PIXAR CHARACTERS  
AND YOUR FELLOW PLAYERS!



EVER WONDERED WHAT YOU'D LOOK LIKE AS A **DISNEY VILLAIN**, OR AS **OLAF**?  
FIND OUT IN THIS HILARIOUS PARTY GAME!  
THERE'S REALLY NO DRAWING TALENT REQUIRED. ANYONE CAN JOIN IN THE FUN AND BE **DOODLING** IN NO TIME!



## DISNEY DRAWSOME

Ever wondered what Buzz Lightyear and Nemo would look like drawn together as one character, or what you'd look like as a Disney Princess? Hilarious drawing game with a huge range of familiar faces to choose from, so anyone can join in the fun and there's no drawing talent required! Includes 95 cards, 70 tokens, 5 drawing boards, 5 pens, 1 sand timer, 1 game die and instructions. Ages 8+. 3-10 players. Average 30 mins gameplay.

### Package size:

7.5 x 7.5 x 2.6 in  
190 x 190 x 65 mm

### Carton Quantity: 18

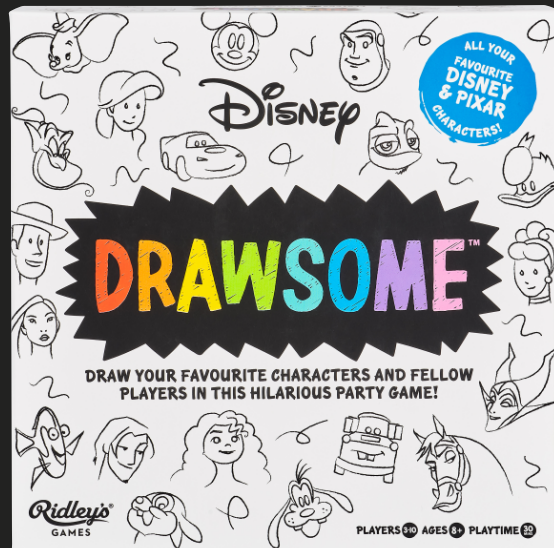
5055923785263

\$26.00 sugg retail



©Disney

©Disney/Pixar



Disney

# LIST OR TWIST



### DISNEY LIST OR TWIST

You'll need to think quickly in this category-guessing game where the answers are only as easy as the clues—and the clues are up to you! We give you the prompts, but you need to put your knowledge to the test to score big for your team. Includes 200 cards, 1 timer, 1 score slider, 1 score pad, 1 pencil and instructions. Ages 8+. 4-10 players. Average 30 mins gameplay.

**Package size:**

4.9 x 6.4 x 2.2 in  
162 x 124 x 55 mm

**Carton Quantity:** 18

**0810073341852**

**\$20.00 sugg retail**



©Disney  
©Disney/Pixar

4-10 8+ 30 MINS

Disney  
EDITION

# Pixelate™



### DISNEY PIXELATE

Test your imagination and creativity by using colorful wooden blocks to create pixel art of your favorite Disney and Pixar characters. Points are awarded for great art and great guesses! Includes 150 Game cards, 100 wooden pixel cubes, 5 score cards, 1 art board, 1 sand timer and instructions. Ages 8+. 2-8 players. Average 30 mins gameplay.

**Package size:**

5.3 x 7.3 x 1.6 in  
185 x 135 x 40 mm

**Carton Quantity:** 18

**0810073341845**

**\$22.00 sugg retail**



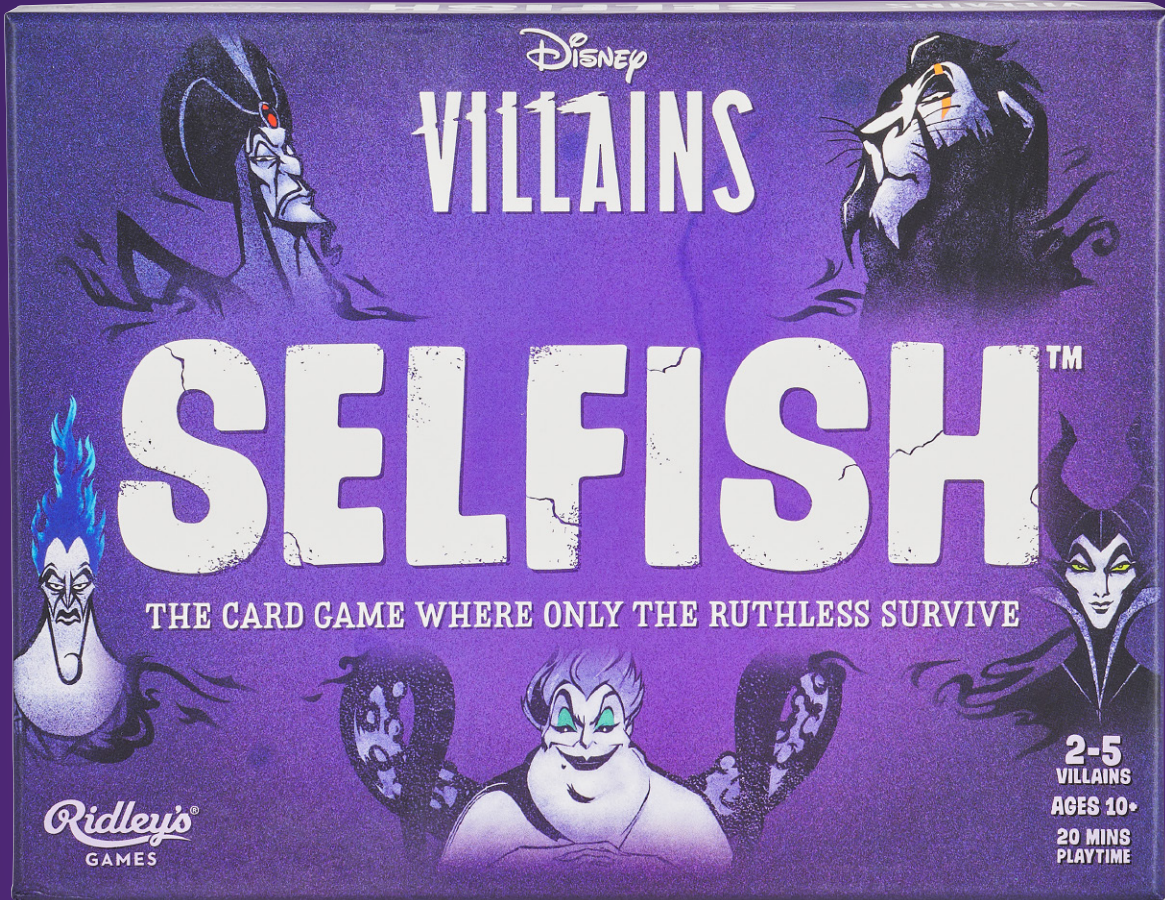
NOT AVAILABLE  
TO SELL IN  
CANADA

©Disney  
©Disney/Pixar

2-8 8+ 30 MINS

# Disney

Ridley's  
GAMES



2-5 10+ 20 MINS

### DISNEY VILLAINS SELFISH

Utterly villainous behaviour will be needed if you want to be the ultimate Disney Baddie and seize the throne! This wicked light-strategy card game is a race to complete your personal quest and take your rightful place as Evildest of Them All. Simultaneously keep control to survive and sabotage the other players as you inch closer to the throne. Includes 70 Quest cards, 48 Control cards, 30 Evil Deed cards, 5 Player cards, 1 Throne card, 5 player mats and instructions. Ages 10+ 2-5 players. Average 20 mins gameplay.

#### Package size:

8.2 x 6.4 x 1.8 in  
162 x 209 x 45 mm

Carton Quantity: 24

0810073340381

\$22.00 sugg retail



©Disney





### DISNEY CAT NAPS

Think you're the cat's meow? Be the first feline to pounce to win the most highly prized treats! Collect three treats and you'll be rewarded with the ultimate nap spot on the castle. Featuring some of your favorite Disney cats. 2-5 players. Ages 6+. Average 15-minute gameplay.

**Package size:**

3.5 x 4.7 x 0.8 in  
120 x 90 x 20 mm

**Carton Quantity:** 24

**9781797228440**

**\$10.00 sugg retail**



©Disney

2-5 6+ 15 MINS



### DISNEY LUCKY PUPS

Compete to win the treats in this pawsome family card game! You and your fellow pups have two rounds to show off your best tricks to score the most highly prized treats. Will you be named Best in Show? Featuring some of your favorite Disney dogs. 2-5 players. Ages 6+. Average 15-minute gameplay.

**Package size:**

3.5 x 4.7 x 0.8 in  
120 x 90 x 20 mm

**Carton Quantity:** 24

**9781797228280**

**\$10.00 sugg retail**



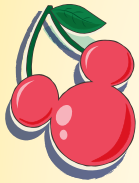
©Disney



2-5 6+ 15 MINS



Disney



**DISNEY MICKEY MAYHEM!  
CDU OF 6**

SPLAT! It's time for fruit-filled fun with the world's most recognised icon: Disney's Mickey Mouse! This fast-paced card-matching game is frenetic, and things could get messy, but you'll create memories that last a lifetime. Includes 64 Mickey Mouse Fruit cards, 4 Fruit Mix-Up cards, 4 Freeze cards, 3 New Basket cards, 1 Clear Hand card, and EFIGS instructions. Ages 6+. 2-6 players. Average 10 mins gameplay. Printed using FSC paper and soy inks, the game comes in a Mickey Mouse-shaped tin that is recyclable.

**CDU size:**

11.1 x 5 x 5.8 in  
127 x 283 x 146 mm

**Package size:**

5.3 x 4.7 x 1.6 in  
119 x 135 x 40 mm

**Carton Quantity: 24**

0810073343115  
\$102.00 sugg retail



For internal store use only.  
Cannot be ordered in individual units.  
0810073342910  
\$17.00 sugg retail

©Disney



PIXAR PARTY



**DISNEY PIXAR PARTY CDU OF 6**

Express yourself through this energetic game of power poses. The first player to spot a match and bust the right move wins the cards! Includes 60 Game cards and EFIGS instructions. Ages 8+. 3-6 players. Average 15 mins gameplay. Packaged in 2-piece Pixar ball tin. Printed using FSC paper and soy inks.

**CDU size:**

9 x 4.3 x 13.3 in  
110 x 228 x 338 mm

**Package size:**

4.3 x 4.3 x 4.3 in  
108 x 108 x 108 mm

**Carton Quantity: 24**

0810073342101  
\$102.00 sugg retail



For internal store use only.  
Cannot be ordered in individual units.  
0810073341838  
\$17.00 sugg retail

©Disney  
©Disney/Pixar





# STAR WARS

## JIGSAW DUEL

**DARTH VADER**

**VS**

**BI-WAN ENOBI**



### STAR WARS JIGSAW DUEL

Who will claim victory in this Star Wars Jigsaw Duel: Obi-Wan Kenobi or Darth Vader? In this innovative competitive game, you and your fellow puzzler each have a 70-piece jigsaw to complete – but there is only one final piece that fits both puzzles. Place the final piece in the wooden stand, choose your side and get ready to race your opponent. The first person to put their jigsaw pieces together and then grab the final, double-sided piece wins the battle! Includes 2 x 70-piece jigsaw puzzles, wooden stand, and EFIGS instructions. Ages 8+. 2 players. Made using 50% recycled materials. Printed using FSC paper and soy inks.

**Jigsaw size:**

5.7 x 9 in  
230 x 145 mm

**Package size:**

6.4 x 8 x 1.5 in  
202 x 163 x 39 mm

**Carton Quantity:** 24

**0810073342941**

**\$15.00 sugg retail**



0810073342941

© & TM Lucasfilm Ltd.

### STAR WARS TRIVIA

Is the Force strong with you? Put your powers to the test with 140 multiple-choice questions spanning *Episodes I-IX*, *Rogue One*, *Solo*, *Clone Wars*, and *The Mandalorian*, this set is sure to challenge even the most dedicated Star Wars fan. There are three ways to play depending on the level of expertise in the group, so everyone from newbies to the ultimate super-fan can get involved. The first player or team to reach 20 points earns the title of ultimate Star Wars champion! Ages 8+. 2+ players. Average 15 mins gameplay.

**Package size:**

5 x 3.6 x 2.1 in  
91 x 128 x 54 mm

**Carton Quantity:** 24

**5055923785225**

**\$13.00 sugg retail**

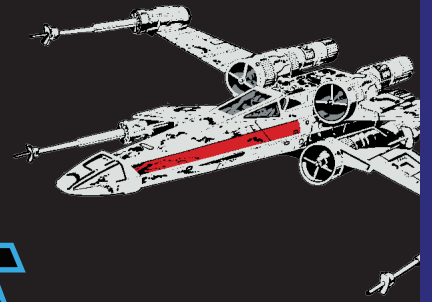


5055923785225

© & TM Lucasfilm Ltd

# STAR WARS

# STAY ON TARGET



Ridley's GAMES

## STAR WARS STAY ON TARGET CDU OF 6

As leader of your fleet, you must organize your crew for attack runs and achieve a direct hit to destroy the *Death Star*! Includes 61 cards and instructions. Packaged in *Death Star* tin with swing tag. Ages 8+. 2-5 players. Average 25 mins gameplay. Printed using FSC paper and soy inks.

### CDU size:

9 x 4.4 x 13.3 in  
112 x 228 x 338 mm

### Package size:

4.3 x 4.3 x 4.3 in  
108 x 108 x 108 mm

### Carton Quantity: 24

0810073342088

\$102.00 sugg retail



For internal store use only.  
Cannot be ordered in individual units.  
0810073341746  
\$17.00 sugg retail

© & TM Lucasfilm Ltd.



2-5 8+ 25 MINS



# HAN SOLO SOLITAIRE

## THE CLASSIC CARD GAME, CARBON FROZEN



## STAR WARS HAN SOLO SOLITAIRE CDU OF 6

The classic game of Solitaire with *Star Wars* Han Solo theme and optional Jedi twist. Includes 54 playing cards and EFIGS instructions. Packaged in tin with Han Solo in carbonite embossed detail. Ages 8+. 1-2 players. Average 20 mins gameplay. Printed using FSC paper and soy inks.

### CDU size:

8.5 x 6.7 x 12.6 in  
110 x 76 x 235 mm

### Package size:

3 x 4.2 x 1.6 in  
107 x 75 x 40 mm

### Carton Quantity: 24

0810073342095

\$90.00 sugg retail



For internal store use only.  
Cannot be ordered in individual units.  
0810073341753  
\$15.00 sugg retail

© & TM Lucasfilm Ltd.

1-2 8+ 20 MINS

# STAR WARS™

# STAR WARS™

# SELFISH™

THE CARD GAME WHERE ONLY THE RUTHLESS SURVIVE

Ridley's  
GAMES

2-5  
PLAYERS  
AGES 8+  
20 MINS  
PLAYTIME

2-5 8+ 20 MINS

## STAR WARS SELFISH

You are searching the galaxy for the Rebel scum aboard the *Millennium Falcon*! This devious light-strategy card game is a race across the galaxy to be the first to capture the iconic ship. Simultaneously preserve your fuel supply to survive and sabotage the other players as you battle your way through space. Includes 48 Fuel cards, 39 Space cards, 31 Upgrade cards, 5 Player cards, 1 Millennium Falcon card, 5 player mats and instructions. Ages 8+. 2-5 players. Average 20 mins gameplay.

### Package size:

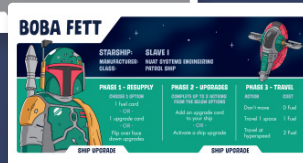
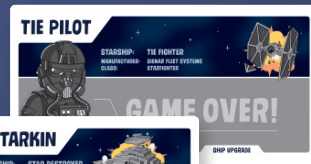
8.2 x 6.4 x 1.8 in  
162 x 209 x 45 mm

Carton Quantity: 24  
0810073340374  
\$22.00 sugg retail



BESPOKE  
Ridley's  
GAMES  
ARTWORK

© & TM Lucasfilm Ltd



# STAR WARS

2-6 PLAYERS

AGES 8+

10+MINS PLAYTIME

# SURVIVE THE SARLACC!

Ridley's GAMES

A SURVIVAL CARD GAME THAT WILL PULL YOU IN!

Disney



2-6 8+ 10 MINS

## STAR WARS SURVIVE THE SARLACC

The Sarlacc is hungry! It's unfurling its tentacles and opening its mouth up wide. Will you fall into the Great Pit of Carkoon? Or will you be the last player to survive? Play as characters from the famous Sarlacc Pit battle scene on Tatooine, as seen in *Star Wars: Return of the Jedi (Episode VI)*. The last surviving player wins! Includes 42 Defence cards, 15 Tentacle cards, 12 Action cards, 6 Character tokens, 6 Special Ability cards, 1 Almighty Sarlacc card, 1 Pit of Carkoon game board. Ages 8+. 2-6 players. Average 10 mins gameplay. Printed using FSC paper and soy inks.

**Package size:**  
5.9 x 5.9 x 1.3 in  
149 x 149 x 32 mm

**Carton Quantity:** 24  
**0810073342934**  
**\$17.00 sugg retail**



BESPOKE  
Ridley's GAMES  
ARTWORK

© & TM Lucasfilm Ltd.



Ridley's GAMES



# STAR WARS™

## DON'T UPSET THE WOOKIEE!

THE CARD GAME OF YOUR FAVOURITE FUZZBALL!



### STAR WARS DON'T UPSET THE WOOKIEE! CDU OF 6

Play a card with a Chewbacca who is angrier than the last until he eventually loses it! Gather a complete set of Chewies, clear your hand, or be the last Wookiee standing to win. Packaged in Wookiee plush. Includes 54 game cards and EFIGS instructions. Ages 8+. 2-5 players. Average 20 mins gameplay.

#### CDU size:

7.4 x 7.9 x 9.7 in  
358 x 188mm x 246 mm

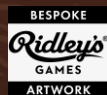
#### Package size:

6.7 x 7.9 x 2.8 in  
200 x 170 x 70 mm

#### Carton Quantity: 24

0810073340237

\$108.00 sugg retail



2-5 8+ 20 MINS

For internal store use only.  
Cannot be ordered in individual units.  
5055923785218  
\$18.00 sugg retail

© & TM Lucasfilm Ltd.



# STAR WARS™

Ridley's  
GAMES

# FORCE BATTLE

## TIME TO TEST YOUR JEDI REFLEXES



LUKE SKYWALKER



REY



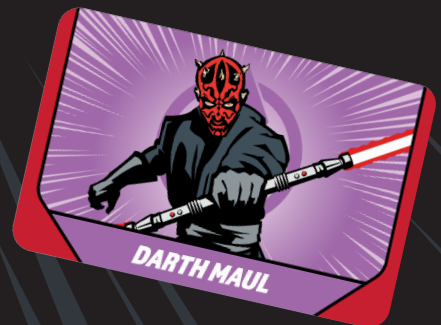
OBI-WAN KENOBI



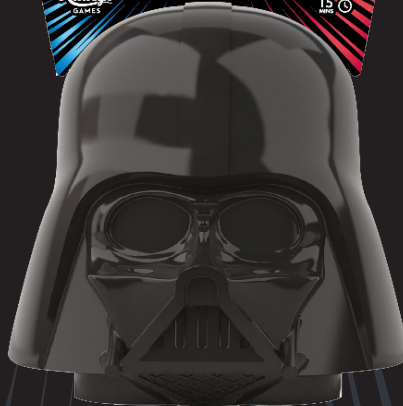
DARTH VADER



KYLO REN



DARTH MAUL



### STAR WARS FORCE BATTLE CDU OF 6

Test your Jedi reflexes in this epic battle between the Light and Dark Sides! Two teams compete to win Duels in this fast-paced original card game. Packaged in a unique Darth Vader mask-shaped portable case. Includes 81 game cards and EFIGS instructions. Ages 6+. 2-8 players. Average 15 mins gameplay.

#### CDU size:

13.5 x 6.8 x 9.8 in  
309 x 225 x 328 mm

#### Package size:

4.6 x 4.4 x 4.3 in  
111 x 117 x 110 mm

#### Carton Quantity: 36

0810073340428

\$96.00 sugg retail



0 810073 340428



2-8 6+ 15

For internal store use only.  
Cannot be ordered in individual units.  
0810073340398  
\$16.00 sugg retail

© & TM Lucasfilm Ltd.



# THE CHILD'S CUTE LOOT CARD GAME



## STAR WARS THE CHILD'S CUTE LOOT CDU OF 6

Play, attack, and take naps in this Mandalorian-themed cute yet cunning card game. Use the powers of the Force to get ahead and gather the most cards to win! Packaged in keepsake Grogu fabric case, ideal for on-the-go fun. Includes 60 Game cards, 15 Action cards and EFIGS instructions. Ages 8+. 3-5 players. Average 30 mins gameplay.

### CDU size:

11.6 x 6.5 x 5.5 in  
285 x 296 x 140 mm

### Package size:

7.1 x 6.3 x 2 in  
160 x 180 x 50 mm

### Carton Quantity: 24

0810073340244

\$108.00 sugg retail



For internal store use only.  
Cannot be ordered in individual units.  
5055923785638  
\$18.00 sugg retail

© & TM Lucasfilm Ltd

3-5 8+ 30 MINS





# STAR WARS

THE

# MANDALORIAN

## PRECIOUS CARGO

2-6 8+ 10 MINS



### STAR WARS THE MANDALORIAN PRECIOUS CARGO CDU OF 6

Test your marksmanship with this hotshot card throwing game. Aim for your faction, build your forces, and claim Grogu. Includes 72 cards, 8 character discs, 1 Grogu disc and instructions. Packaged in two-piece Mandalorian helmet case. Ages 8+. 2-6 players. Average 10 mins gameplay.

**CDU size:**  
8.5 x 6.7 x 12.6 in  
170 x 215 x 320 mm

**Package size:**  
4.5 x 6.3 x 4.4 in  
160 x 115 x 112 mm

**Carton Quantity:** 36  
**0810073342064**  
**\$102.00 sugg retail**



For internal store use only.  
Cannot be ordered in individual units.  
0810073341791  
\$17.00 sugg retail

© & TM Lucasfilm Ltd.

